

# People Powered Places

Support Clinic – Application form for  
Voluntary, Community & Faith  
organisations

27 June 2023

**People**

**Powered**

**Places**

# WHO IS IN THE ROOM?



Kris Krishnarajah - **Participatory Democracy Coordinator**

Sadia Ur-Rehman – **Resident Engagement and Participation Manager**

Jyoti Singh – **Community Neighbourhood Manager**

Samantha Ulysses – **Community Neighbourhood Senior Officer**

**WE ARE NEWHAM.**



# HOUSEKEEPING

- This session will be recorded and uploaded onto Newham Co-create for those who couldn't make it. Make sure you pop your camera off if you prefer not to be recorded.
- We have a Q&A session at the end so hold on tight to your questions in the first part of the session and we will address questions then.
- If you need any support during the session, let one of the facilitators know in the chat.

# WHY ARE WE HERE?



- Introduce you to People Powered Places
- Support you to apply for a grant of up to £20,000
- Make a difference in Newham!

**WE ARE NEWHAM.**



# SCHEDULE

Time	Item
6:00	Welcome and housekeeping
6:10	What is People Powered Places
6:20	The priorities and some details of the application process
6:45	<b>Your questions</b>
7:05	Run through of the application form
7:25	Next steps
7:30	Clinic ends

# WHAT IS PEOPLE POWERED PLACES?

**People Powered Places (previously Community Assemblies) give Newham residents the chance to make positive change together in their local area.**

- We are one of the largest participatory budgeting programme in the country.
- Newham has 8 Community Neighbourhoods.
- Each neighbourhood has been allocated **£200,000** funding to spend on local projects done by local people in the next two years.
- Anyone who lives, works or learns in the Community Neighbourhood can take part.

**This money comes from Neighbourhood Community Infrastructure Levy (NCIL)**

NCIL is a charge on new development to help fund strategic and neighbourhood infrastructure in Newham.

**What are the criteria for NCIL funded projects?**

- 1) Projects that help with the development and growth of your area
- 2) Projects that improve our public spaces and infrastructure
- 3) Projects that improve the health and happiness of the local community

**WE ARE NEWHAM.**

**People**

**Powered**

**Places**

**Step 1:** You decide on local priorities.

**Step 2:** You discuss solutions to improve your area.

**We are  
here**

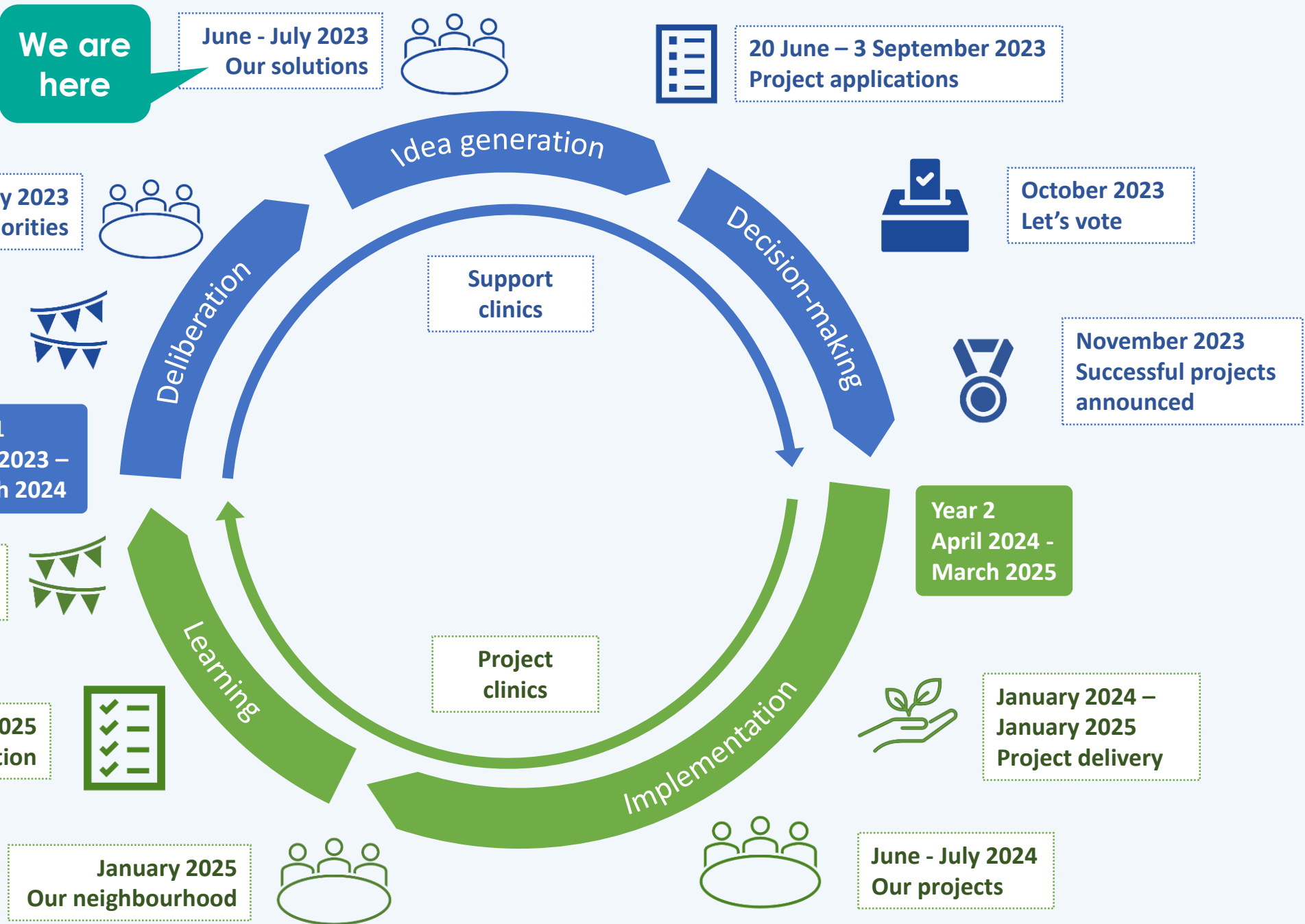
**Step 3:** You come up with a project proposal to receive funding. Residents can apply for up to £5,000 and local organisations (VCFS) can apply for up to £20,000.

**Step 4:** You vote for your favourite projects.

**Step 5:** Successful projects are delivered by residents and local organisations with support from Newham Council.

**Step 6:** We celebrate our achievements.

# People Powered Places



# THE 8 COMMUNITY NEIGHBOURHOODS

## London Borough of Newham Community Neighbourhood Areas and Wards



# Who can Apply?

- Anyone who lives, works or learns in the Community Neighbourhood can apply.
- You must be **16** years old or over to apply.
- No prior experience or knowledge needed.
- Please note that you cannot apply if you are part of a People Powered Places working group anywhere in Newham
- Deadline for submissions is **Sunday 3 September 2023**

We highly encourage new groups to apply to bring fresh project ideas.

# PRIORITY THEMES

Based on the 8 priorities from Building a Fairer Newham, 6 themes have been identified to decide on your local priorities.



**Health and wellbeing** People in Newham have poorer health outcomes than the population overall. This theme includes improving health and social care, tackling health inequalities and responding to the cost of living crisis. It also includes topics like life expectancy, loneliness and isolation, ageing well and mental health.



**Community safety** There has been a substantial drop in the proportion of people feeling safe in Newham. This theme includes improving women's safety, tackling the roots of crime and anti-social behaviour, raising awareness around hate crime and women's safety. It also includes building trust and accountability in Community Safety services, and improving feeling of safety during the day and at night, including in parks and open spaces.



**Inclusive Economy** Newham's employment rate is lower than that of the UK. This theme includes inclusive economic growth, improving quality of life for all, supporting local businesses and creating accessible learning opportunities and job opportunities. It also includes topics like financial wellbeing and food security.



**Youth empowerment** Newham has the second youngest age profile of any borough in London – over nine in ten aged under 65. This theme includes enabling all children and young people to reach their potential, be safe, happy and healthy regardless of their background. It also includes youth safety, activities for children and young people, play, school readiness and high quality childcare.



**Environment & public spaces** Air pollution in Newham is worse than anywhere else in London. This theme includes making neighbourhoods quieter, safer and cleaner and responding to the climate emergency. It also includes improved public spaces, including parks, community gardens and green spaces; and cleaner environment, including reducing fly-tipping and air pollution.



**Community development & participation** Around a quarter of residents agree that they can influence decisions in their local area. This theme includes increasing people's involvement and sense of belonging to their local community, improving the sense of getting on well together, being satisfied with the area and increasing participation. It also includes topics like volunteering, culture, interfaith and intercultural dialogue.

# CHOSEN PRIORITIES

## Beckton and Royal Docks



## Custom House and Canning Town



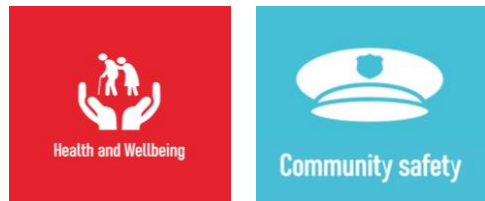
## East Ham



## Forest Gate & Maryland



## Green Street



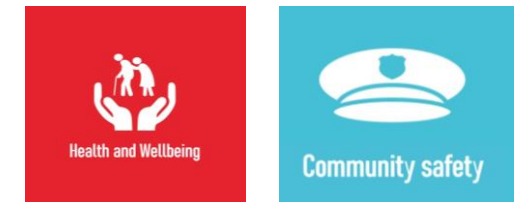
## Manor Park



## Plaistow



## Strafford and West Ham



# HEALTH AND WELL BEING

## Inspiring projects from previous cycles:



### Meeli's Social Club - £5000

Activities for young adults over 18 with learning disabilities and mental health to develop social skills and build friendships.



### Connect in Nature - £3040

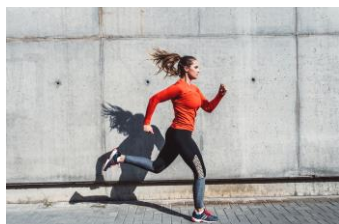
Support network for women to come to a safe space to meet, talk and exercise, improving well-being, mental and physical health and decreasing isolation.



### Generation East London - £13,070

BSL storytelling for children, Deaf Awareness Training and self-defence classes for women.

## Inspiring projects from around the world:



### Good gym

Organise runs, walks, and cycles to help local community organisations and isolated older people by doing practical tasks.



### Befriending

Connecting people in the community to relieve isolation and loneliness.



### The Heart Movement Bus

A free, accessible and mobile community space for people to experience the benefits of mindfulness and compassion practices.

# INCLUSIVE ECONOMY

Inspiring projects from previous cycles:



## Community Wardrobe - £5000

Selling good quality pre-loved clothes at affordable prices.



## Make Do and Mend- £1912

Twice weekly workshop helping residents and students to mend, alter and upcycle clothes in their wardrobes.



## Manor Park Pop Up Market: £5,000

A bi-weekly / monthly pop-up market encourages local residents to shop locally, meet the traders and support their local businesses.

# YOUTH EMPOWERMENT

## Inspiring projects from previous cycles:



### Youth Football Club - £4150

Football sessions and special events encouraging youth to become more physically active and socialise



### Multi Use Games Area at Beckton Globe - £5000

Multi Use Games Area at the back of Beckton Globe Youth Zone. Outdoor space for young people who use the youth zone to play sports and games.



### Voices through the wind - £2000

Raggo Zulu Nation's 5 weeks creative writing course enabled young children between the ages of 8 -13 to express their voices through creative writing.

## Inspiring projects from around the world:



### Playstreets

Temporary road closures to allow children, young people and adults to play in the street.



### Youth theatres

Empowering young people to build confidence through theatre.



### Power-Up

An arts and skills development project for young women in Islington at risk of becoming involved in criminal activity.

# COMMUNITY SAFETY

## Inspiring projects from previous cycles:



### What's the point - £16,320

Peer-led programme to empower children and young people to be influencers of change in their culture around carrying knives.



### Safer streets - £9,250

Training and community engagement events for Plaistow to help develop a proactive neighbourhood watch scheme in Plaistow.



### Drug reduction programme - £20,000

Decrease drug use figures by supporting families from ethnic minorities, increase drug awareness and develop street programme.

## Inspiring projects from around the world:



### We Stand Together project

Brings together businesses and venues in Portsmouth and the Isle of Wight committed to providing a supportive environment for anyone who has experienced sexual violence or harassment.



### Walking bus

Keeping children safe on the streets by arranging walking bus to school with neighbours.



### Hate Crime Community Ambassadors

Volunteers who raise awareness of hate crimes in the community.

# ENVIRONMENT AND PUBLIC SPACES

## Inspiring projects from previous cycles:



**Welcome to the Channelsea - £18680**

Improving the Channelsea River area with workshops, a welcome archway, and a Green propulsion.



**Signposts and Trails to Playgrounds- £5000**

Enhance awareness of playgrounds by way of colourful signposts at key junctures and painted trails which lead from nearby businesses.

**Planet Youth - £5000**

Youth and environment workshops to encourage upcycling.



## Inspiring projects from around the world:



**Orchestra in the park - Dulwich**



**Musical play equipment**

**WE ARE NEWHAM.**

# COMMUNITY DEVELOPMENT AND PARTICIPATION

## Inspiring projects from previous cycles:



### Willow - £5000

A collaborative theatre project in Central Park with theatre and craft workshop series culminating in an event



### The ACID project - £20,000

Free community events at the Custom House bookshop



### Beckton Community projects - £19,895

Community events and exercise classes, women's yoga.

## Inspiring projects from around the world:



### Library of things

Borrow useful things that you only use now and again



### Community fridge

Reduce food waste by sharing food with neighbours



### The Big Lunch

Communities across the UK come together to share friendship, food and fun.

# PRACTICAL DETAILS

- Projects are expected to be completed by **31 December 2024**
- Projects need to address 1 or more of the 3 priorities as voted for by residents for the neighbourhood you are applying in. Details of the priorities per neighbourhood is on page 6 of the application form.
- You cannot apply for more than one project for the 2023-25 People Powered Places cycle.
- Projects will need to be an entirely new project and not a continuation of a previous Community Assembly project.
- Any staff or salary expenses need to be detailed in the budget section on page 12. All staff and salary expenses must follow employment rules, provide value for money and directly support the delivery of the project. This may be subject to further enquiries from the Community Neighbourhood team for further clarification, including supporting documents.

# PRACTICAL DETAILS

- Projects in public spaces may need prior consultation. Speak to your community neighbourhood team if you are unsure if this may be needed and attend our **'How to do a consultation' support clinic on Monday 24 July at 6pm**. Visit People Powered Places on Newham Co-create to find out how to book a spot.
- If you are unsure on costing your project, use the **cost catalogue document** as a rough guide and attend our **'How to cost your project' support clinic on Thursday 20 July at 6pm**. The cost catalogue and how to book a spot at the support clinic can be found on Newham Co-create. Make sure to also attend your local **'Our Solutions'** events to get guidance on project ideas
- You may need to seek permissions, for example on projects that will be held on land/parks and premises. Please be clear about locations in the section on the form.
- You may be asked for safeguarding policies and DBS checks depending on the nature of the project. Please ensure these are in place.
- Please read the 'Conditions of the grant' section on page 16 of the application form.

# SUPPORT CLINICS

Support clinic	Date & times	Eventbrite Page
How to submit a project application for voluntary, community and faith sector groups	Tuesday 27 June 6 – 7.30pm	<a href="https://VCFsSupportClinic.eventbrite.com">https://VCFsSupportClinic.eventbrite.com</a>
How to submit a project application for residents	Thursday 13 July 6 – 7.30pm	<a href="https://RESIDENTSupportClinic.eventbrite.com">https://RESIDENTSupportClinic.eventbrite.com</a>
How to cost your project	Thursday 20 July 6 – 7.30pm	<a href="https://HowtoCostYourProject.eventbrite.com">https://HowtoCostYourProject.eventbrite.com</a>
How to do a consultation	Monday 24 July 6 – 7.30pm	<a href="https://HowtoDoAConsultation.eventbrite.com">https://HowtoDoAConsultation.eventbrite.com</a>

# HOW TO APPLY

- Go to Newham Co-create : <https://newhamco-create.co.uk/en/peoplepoweredplaces>
- Download and fill in the application form or print the 'print ready' version to fill out by hand (libraries can give you a print-out if you don't have a printer). You can return it by email to your local Community Neighbourhood team OR hand it in OR post it to your local Newham library.
- You have until **Sunday 3 September 2023** to apply.
- After the deadline, the working group and Council departments will process your application.
- Successful applications will be put through to the voting phase of the cycle for residents to choose their favourite projects.
- **TIP** – get your application form in early so that working groups and council departments can have a chance to read through it and have enough time to ask you further questions if needed. You may get the opportunity to refine your application before the deadline.

# Upcoming events: 'Our Solutions'



Neighbourhood	Location	Date and Time	Zoom links	Eventbrite page
Forest Gate Community and Maryland Neighbourhood	Forest Gate Library, 2-6 Woodgrange Rd, E7 0QH	Monday 3 July 2023 6-8pm	<a href="https://zoom.us/j/93244156441">https://zoom.us/j/93244156441</a>	<a href="https://OurSolutionsForestGateMaryland.eventbrite.com">https://OurSolutionsForestGateMaryland.eventbrite.com</a>
Plaistow Community Neighbourhood	Plaistow Library	Tuesday 4 July 2023 6-8pm	<a href="https://zoom.us/j/94486361276">https://zoom.us/j/94486361276</a>	<a href="https://OurSolutionsPlaistow.eventbrite.com">https://OurSolutionsPlaistow.eventbrite.com</a>
East Ham Community Neighbourhood	East Ham Library	Wednesday 5 July 2023 6-8pm	<a href="https://zoom.us/j/98963738268">https://zoom.us/j/98963738268</a>	<a href="https://OurSolutionsEastHam.eventbrite.com">https://OurSolutionsEastHam.eventbrite.com</a>
Stratford and West Ham Community Neighbourhood	Stratford Library, 3 The Grove, E15 1EL	Thursday 6 July 2023 6-8pm	<a href="https://zoom.us/j/98384026861">https://zoom.us/j/98384026861</a>	<a href="https://OurSolutionsStratfordWestHam.eventbrite.com">https://OurSolutionsStratfordWestHam.eventbrite.com</a>
Beckton and Royal Docks Community Neighbourhood	Beckton Globe Library	Monday 10 July 2023 6-8pm	<a href="https://zoom.us/j/95002042811">https://zoom.us/j/95002042811</a>	<a href="https://OurSolutionsBecktonRoyalDocks.eventbrite.com">https://OurSolutionsBecktonRoyalDocks.eventbrite.com</a>
Manor Park Community Neighbourhood	Jack Cornwell Community Centre	Wednesday 12 July 2023 6-8pm	<a href="https://zoom.us/j/92810629233">https://zoom.us/j/92810629233</a>	<a href="https://OurSolutionsManorPark.eventbrite.com">https://OurSolutionsManorPark.eventbrite.com</a>
Green Street Community Neighbourhood	Katherine Road Community Centre	Monday 17 July 2023 6-8pm	<a href="https://zoom.us/j/94349416204">https://zoom.us/j/94349416204</a>	<a href="https://OurSolutionsGreenStreet.eventbrite.com">https://OurSolutionsGreenStreet.eventbrite.com</a>

## Any questions?

# The application form – run through

**We will now run through the form itself**

# Next steps

- Thank you for joining!
- Need more help? Contact your local team
- Spread the word: share the opportunity with your neighbours, family and friends
- Tell us how this session went

# Community Neighbourhood contact details



<p><b>Beckton and Royal Docks Community Neighbourhood Team</b> Phone: <b>020 3373 0853</b> Email: <a href="mailto:CN.BecktonRoyalDocks@newham.gov.uk">CN.BecktonRoyalDocks@newham.gov.uk</a></p>	<p><b>Custom House and Canning Town Community Neighbourhood Team</b> Phone: <b>020 3373 0854</b> Email: <a href="mailto:CN.CustomHouseCanningTown@newham.gov.uk">CN.CustomHouseCanningTown@newham.gov.uk</a></p>	<p><b>East Ham Community Neighbourhood Team</b> Phone: <b>020 3373 0827</b> Email: <a href="mailto:CN.Eastham@newham.gov.uk">CN.Eastham@newham.gov.uk</a></p>
<p><b>Forest Gate and Maryland Community Neighbourhood Team</b> Phone: <b>020 3373 0856</b> Email: <a href="mailto:CN.Forestgate@newham.gov.uk">CN.Forestgate@newham.gov.uk</a></p>	<p><b>Green Street Community Neighbourhood Team</b> Phone: <b>020 3373 0857</b> Email: <a href="mailto:CN.Greenstreet@newham.gov.uk">CN.Greenstreet@newham.gov.uk</a></p>	<p><b>Manor Park Community Neighbourhood Team</b> Phone: <b>020 3373 0858</b> Email: <a href="mailto:CN.Manorpark@newham.gov.uk">CN.Manorpark@newham.gov.uk</a></p>
<p><b>Plaistow Community Neighbourhood Team</b> Phone: <b>020 3373 0859</b> Email: <a href="mailto:CN.Plaistow@newham.gov.uk">CN.Plaistow@newham.gov.uk</a></p>	<p><b>Stratford &amp; West Ham Community Neighbourhood Team</b> Phone: <b>020 3373 0826</b> Email: <a href="mailto:CN.Stratfordwestham@newham.gov.uk">CN.Stratfordwestham@newham.gov.uk</a></p>	

**WE ARE NEWHAM.**

