



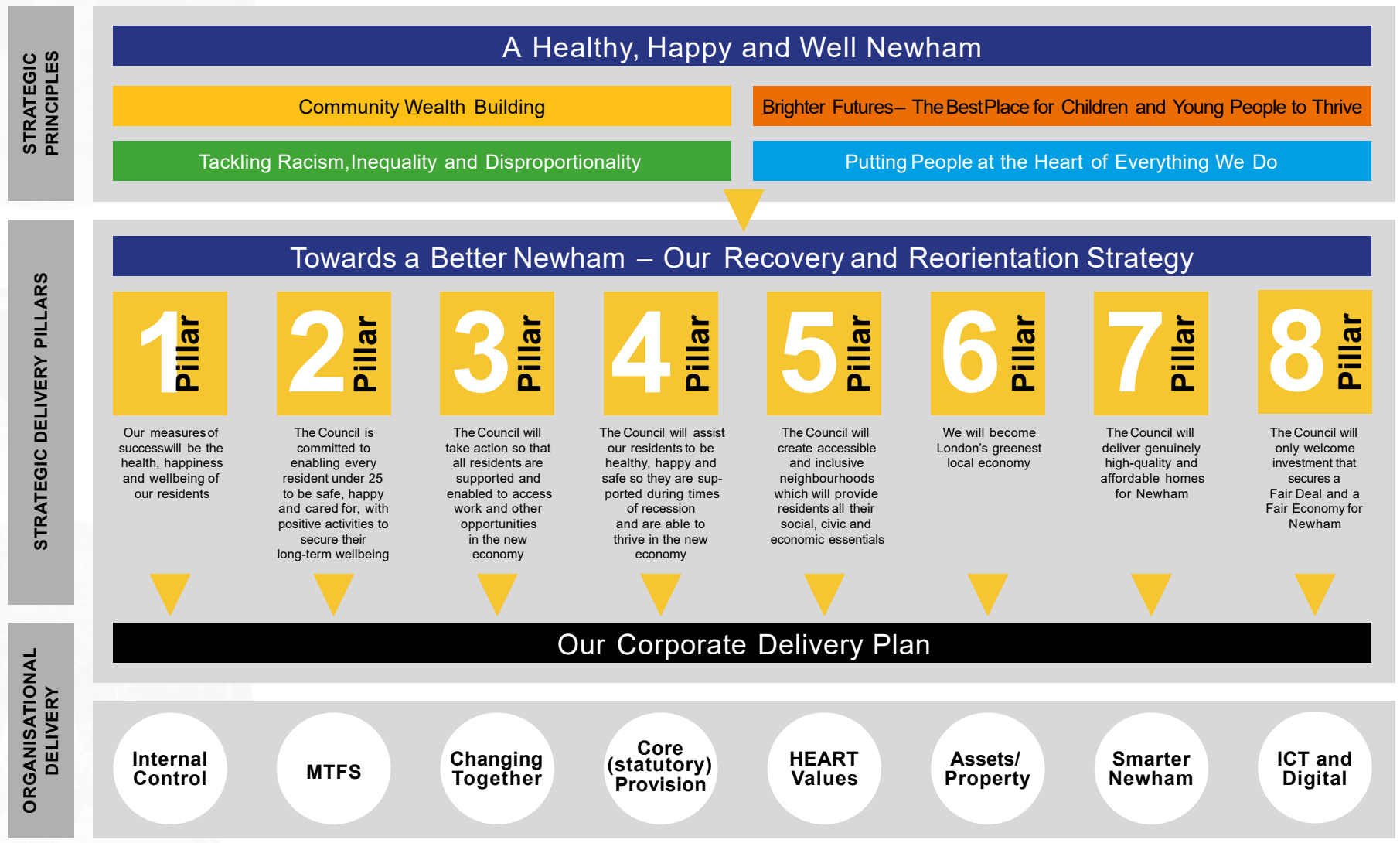
CANNINGTOWN VISION



CANNING TOWN VISION

- Our core message which guides the masterplan
- Reflecting Newham's objectives
- Reflecting the residents and the community
- Embodies the uniqueness of the Canning Town regeneration
- Can be shaped for the different audiences we need to communicate with

People at the Heart of Everything We Do



BUILDING A FAIRER NEWHAM

Healthier Newham and ageing well

Newham's inclusive economy to support you in these hard times

Your neighbourhood

Safer Newham

Homes for our residents

Supporting our young people

People powered Newham and widening participation

A campaigning Council



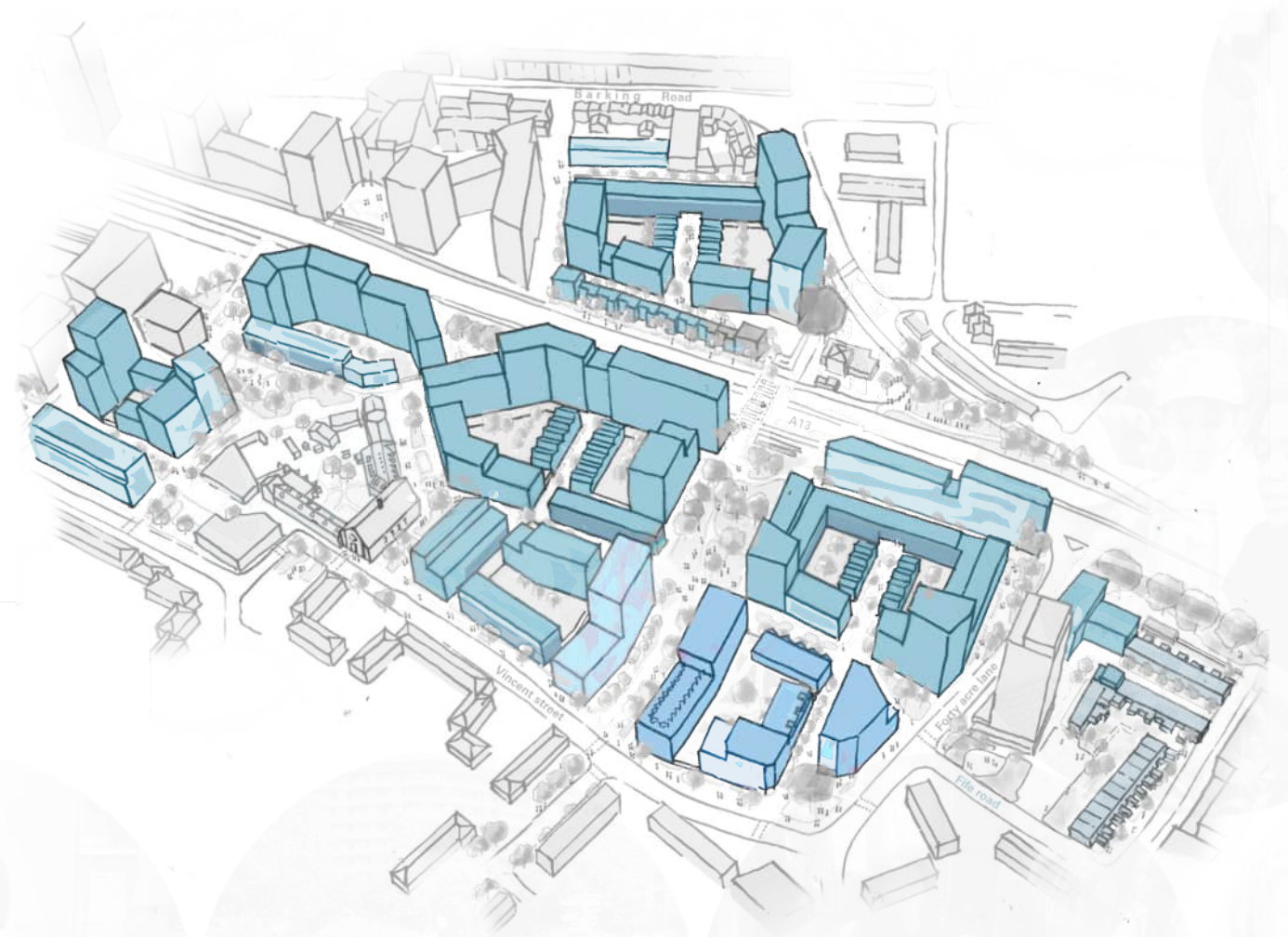
CANNINGTOWN



CANNINGTOWN

*good **homes** for people to lead full lives,*

homes



CANNING TOWN

good **homes** for people to lead full lives,
a safe, connected, and healthy **place**,



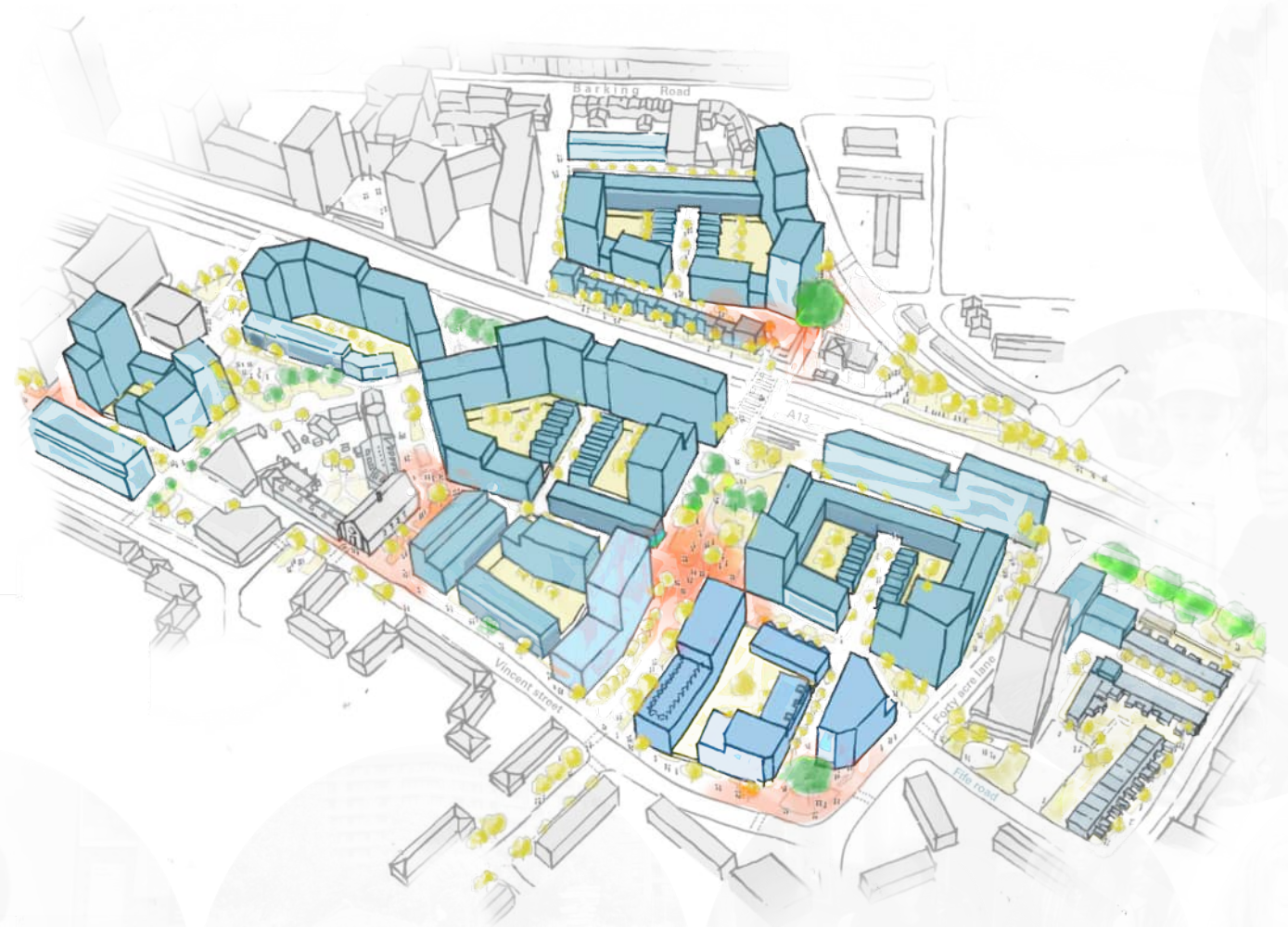
CANNING TOWN

good **homes** for people to lead full lives,
a safe, connected, and healthy **place**,
a **community** brought together,

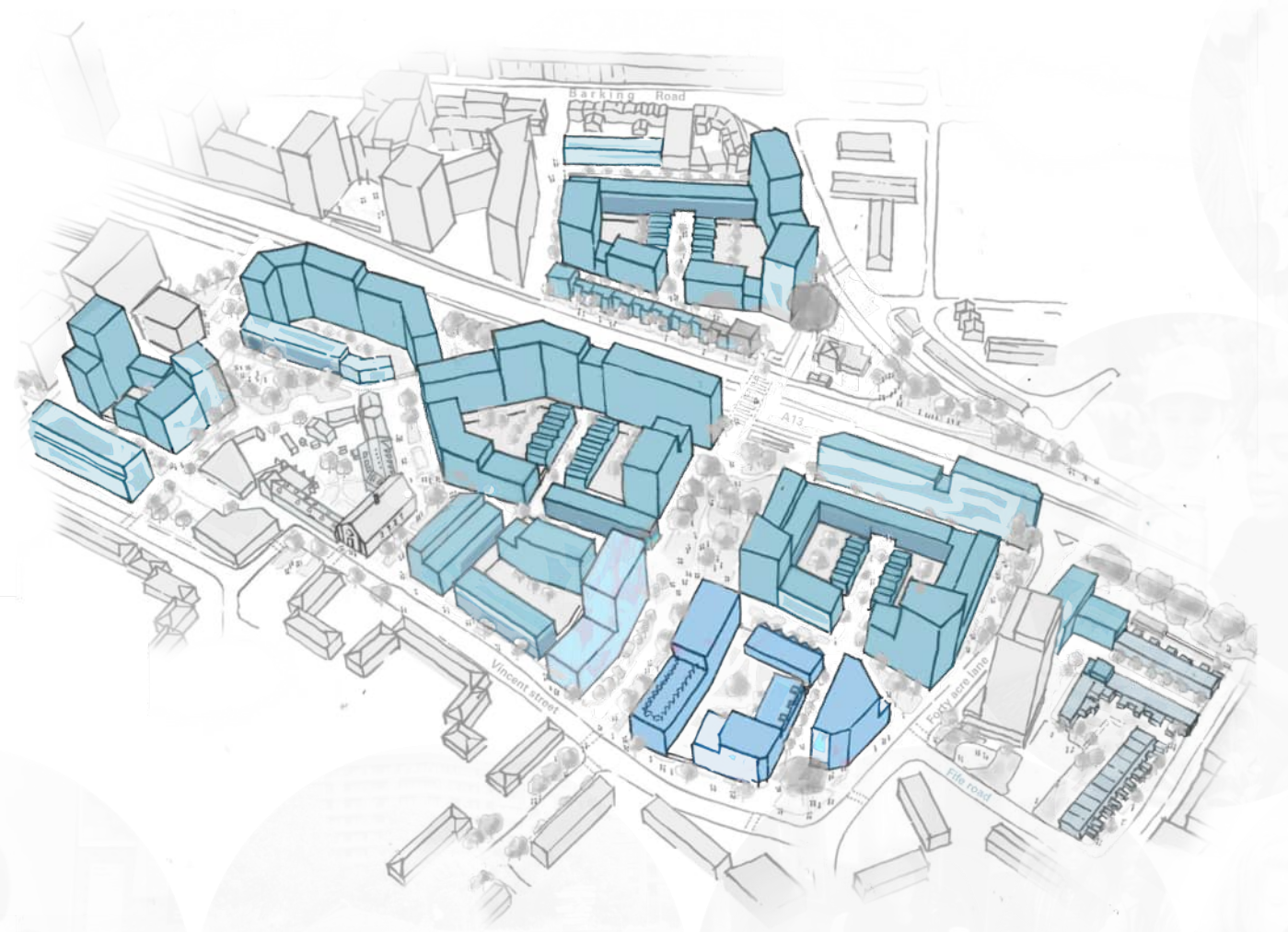


CANNING TOWN

*good **homes** for people to lead full lives,
a safe, connected, and healthy **place**,
a **community** brought together,
building a vibrant, welcoming **neighbourhood**.*



homes



homes

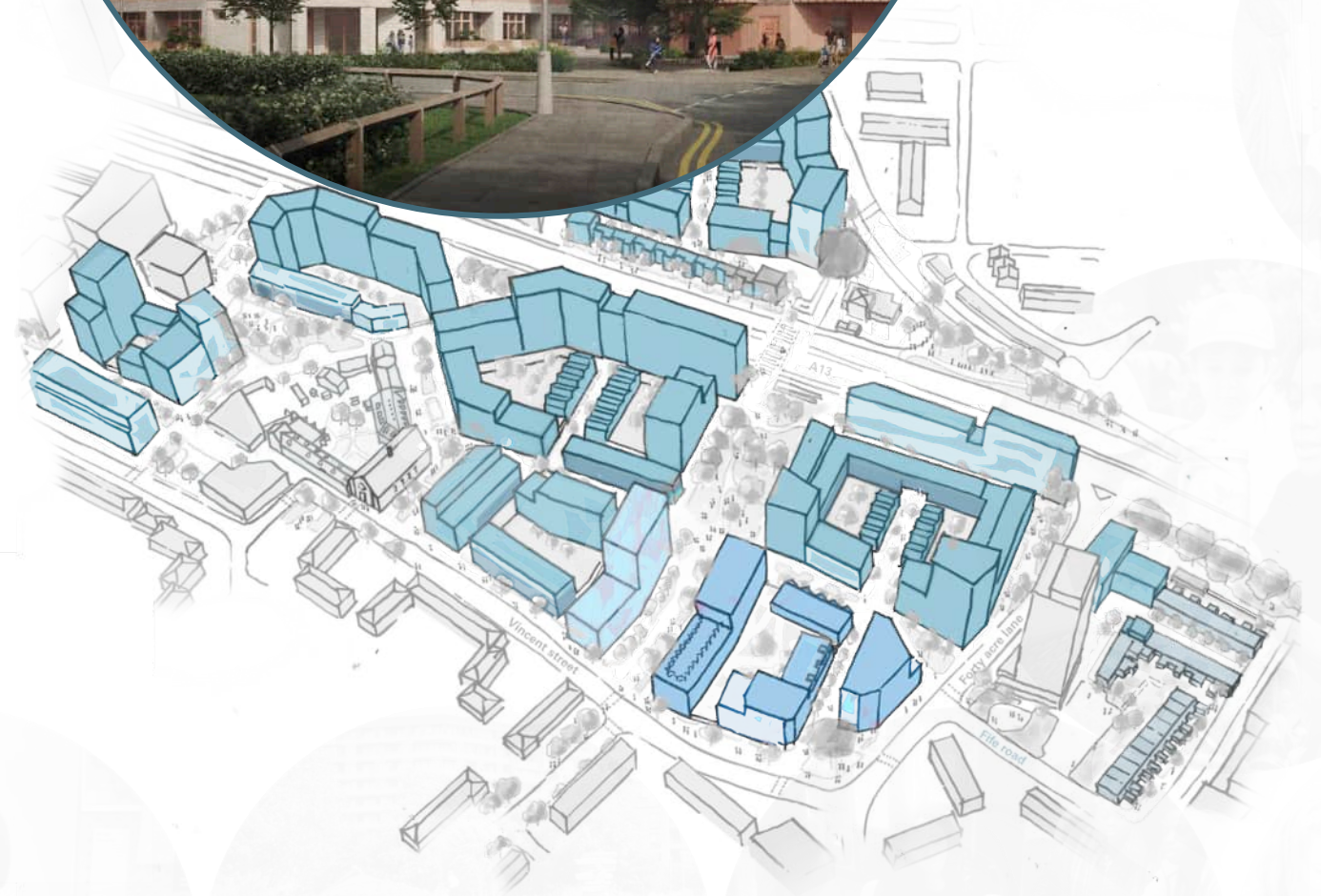
- **50% genuinely affordable homes**

Delivering much needed council homes for Newham

Enabled by council self-delivery

All money from sales reinvested into council housing

Benefitting local people first



homes

- **50% genuinely affordable homes**

Delivering much needed council homes for Newham

Enabled by council self-delivery

All money from sales reinvested into council housing

Benefitting local people first

- **Over 500 new family homes**

3, 4, and 5 bedroom homes for Canning Town's local need

Responding to residents' housing needs and our team's research

Intergenerational housing for families who want to stay together

A variety of houses with gardens and accessible larger flats



homes

- **50% genuinely affordable homes**

Delivering much needed council homes for Newham

Enabled by council self-delivery

All money from sales reinvested into council housing

Benefitting local people first

- **Over 500 new family homes**

3, 4, and 5 bedroom homes for Canning Town's local need

Responding to residents' housing needs and our team's research

Intergenerational housing for families who want to stay together

A variety of houses with gardens and accessible larger flats

- **Fit for the future**

Passivhaus homes which are efficient and environmentally friendly

Lower energy bills ensuring homes remain affordable for local people

Homes which protect from noise and air pollution

Resilient homes which are built to last



homes

- **50% genuinely affordable homes**

*Delivering much needed council homes for Newham
Enabled by council self-delivery
All money from sales reinvested into council housing
Benefitting local people first*

- **Over 500 new family homes**

*3, 4, and 5 bedroom homes for Canning Town's local need
Responding to residents' housing needs and our team's research
Intergenerational housing for families who want to stay together
A variety of houses with gardens and accessible larger flats*

- **Fit for the future**

*Passivhaus homes which are efficient and environmentally friendly
Lower energy bills ensuring homes remain affordable for local people
Homes which protect from noise and air pollution
Resilient homes which are built to last*

- **A full life well lived**

*Homes for people at all stages of their lives
Young people, families, and later living
A place for working people to live in Central London
A place to stay and grow*



place



place

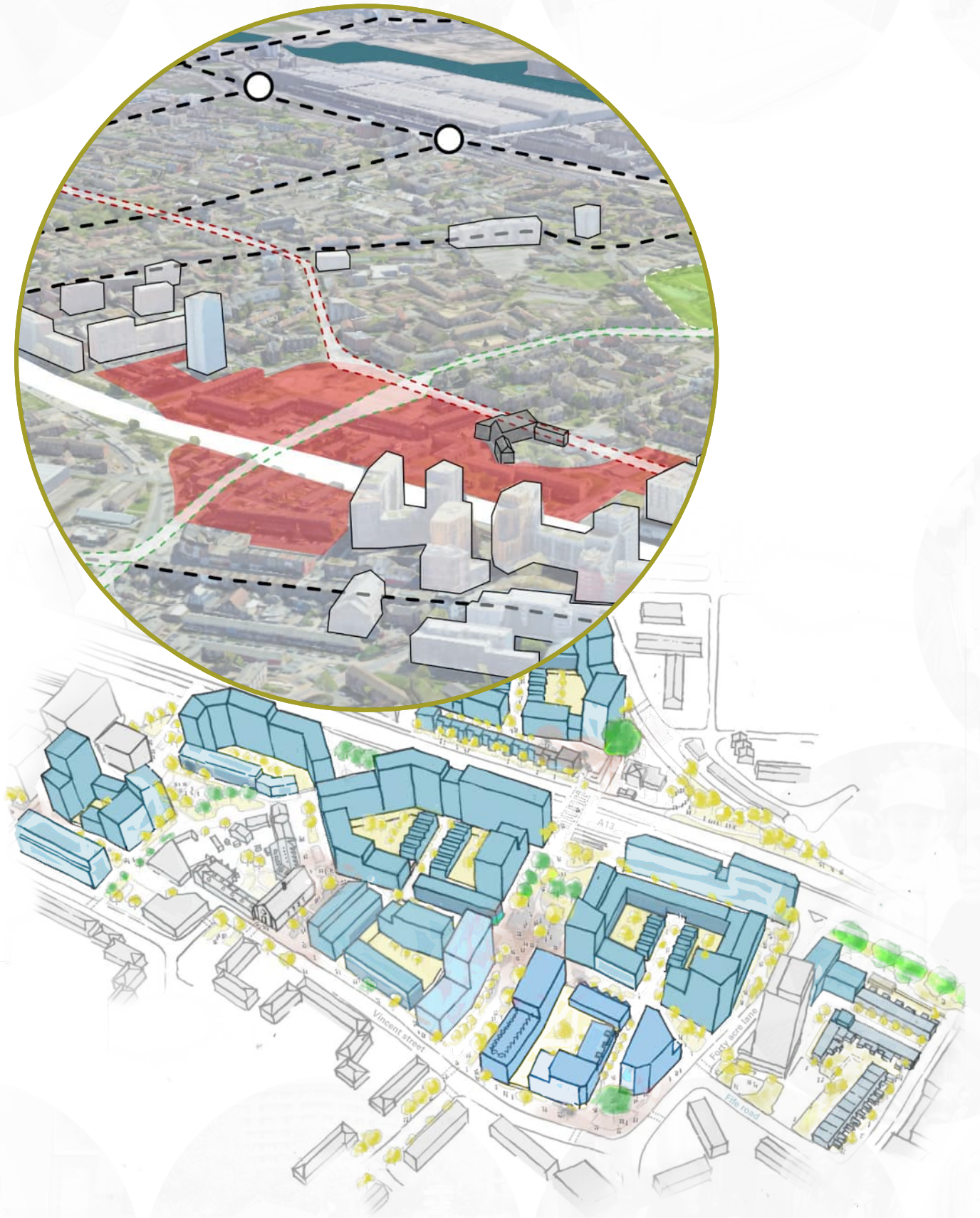
- **Connected and safe**

New connections through the masterplan and across the borough

A place people will want to walk through

Improving and reconnecting across the A13

Clear routes, visible sight-lines, and well lit



place

- **Connected and safe**

*New connections through the masterplan and across the borough
A place people will want to walk through
Improving and reconnecting across the A13
Clear routes, visible sight-lines, and well lit*

- **Active and healthy living**

*A network of welcoming streets which encourage active travel
Carefully planned to combat noise and air pollution from the A13
Space for children and young people to play
All spaces accessible and inclusive*



place

- **Connected and safe**

*New connections through the masterplan and across the borough
A place people will want to walk through
Improving and reconnecting across the A13
Clear routes, visible sight-lines, and well lit*

- **Active and healthy living**

*A network of welcoming streets which encourage active travel
Carefully planned to combat noise and air pollution from the A13
Space for children and young people to play
All spaces accessible and inclusive*

- **Green, characterful, varied**

*Varied character areas - main routes and intimate streets
Green spaces at key locations with individual identities and activities
Better access to nature
Plants and wildlife specified for resilience, biodiversity, and beauty*



place

- **Connected and safe**

*New connections through the masterplan and across the borough
A place people will want to walk through
Improving and reconnecting across the A13
Clear routes, visible sight-lines, and well lit*

- **Active and healthy living**

*A network of welcoming streets which encourage active travel
Carefully planned to combat noise and air pollution from the A13
Space for children and young people to play
All spaces accessible and inclusive*

- **Green, characterful, varied**

*Varied character areas - main routes and intimate streets
Green spaces at key locations with individual identities and activities
Better access to nature
Plants and wildlife specified for resilience, biodiversity, and beauty*

- **Rooted in local people and history**

*An evolving story of people: past, present, and future
Footprints of the past reflected in the landscape
Local stories integrated into artwork and wayfinding
Interventions produced and influenced by residents*



community



community

- **Keeping the community together**

A new home for any current resident who wants to stay

Keeping family, friends, and neighbours together

Reinvigorating the sense of community

Offering a Fair Deal and a continued stake in the future



community

- **Keeping the community together**

- A new home for any current resident who wants to stay*
 - Keeping family, friends, and neighbours together*
 - Reinvigorating the sense of community*
 - Offering a Fair Deal and a continued stake in the future*

- **A place to stay and grow**

- A place which welcomes people of all ages and backgrounds*
 - Allowing people to stay in the area throughout their lives*
 - Supporting young people with spaces and facilities*
 - Bringing new people into the area*



community

- **Keeping the community together**

*A new home for any current resident who wants to stay
Keeping family, friends, and neighbours together
Reinvigorating the sense of community
Offering a Fair Deal and a continued stake in the future*

- **A place to stay and grow**

*A place which welcomes people of all ages and backgrounds
Allowing people to stay in the area throughout their lives
Supporting young people with spaces and facilities
Bringing new people into the area*

- **Facilities and amenities**

*Community facilities at key locations
Local retail, offering increased access to local jobs for residents
Adult education facilities near the town centre are a major aspiration
Flexibility for use to be determined according to future need*



community

- **Keeping the community together**

- A new home for any current resident who wants to stay*
 - Keeping family, friends, and neighbours together*
 - Reinvigorating the sense of community*
 - Offering a Fair Deal and a continued stake in the future*

- **A place to stay and grow**

- A place which welcomes people of all ages and backgrounds*
 - Allowing people to stay in the area throughout their lives*
 - Supporting young people with spaces and facilities*
 - Bringing new people into the area*

- **Facilities and amenities**

- Community facilities at key locations*
 - Local retail, offering increased access to local jobs for residents*
 - Adult education facilities near the town centre are a major aspiration*
 - Flexibility for use to be determined according to future need*

- **Designed in partnership**

- Instilling co-design throughout the process*
 - Showing residents how their input has shaped the design*
 - Identifying key elements for co-design to continue after planning*
 - Building and maintaining trust*



