

# Manwood Street

## Site Location

The site is located in a predominantly residential area with 2 storey terrace housing fronting Silverland Street and Grenadier Street.

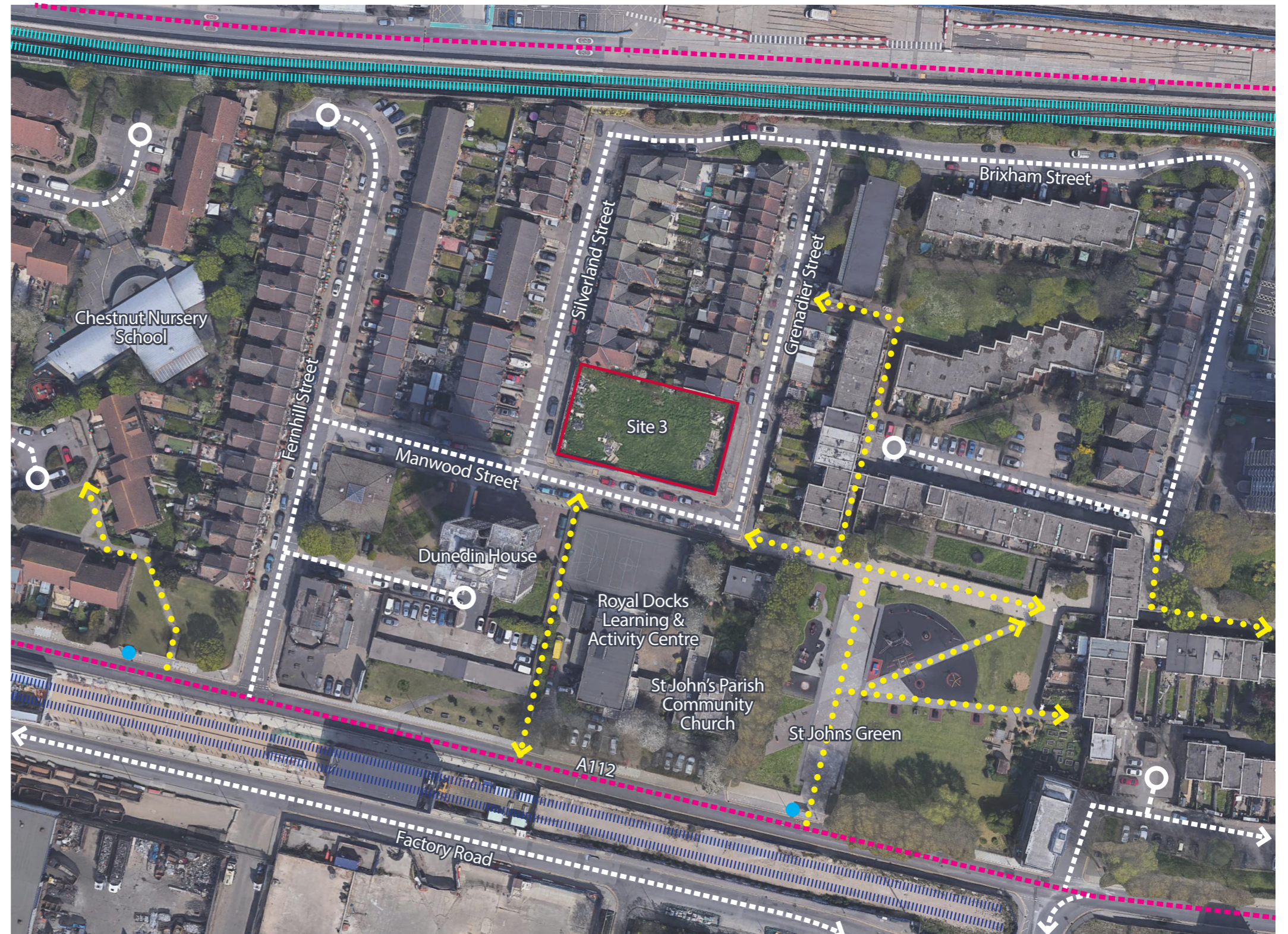
To the South of the site there are a religious centre 'The Parish of North Woolich with Silvertown' and an educational facility 'Royal Docks & Learning Centre'. Also a 20 storey residential tower 'Dunedin House' faces the South-West boundary of the site.

St Johns Green is situated to the South East of the Site. It hosts a play area and pedestrian routes.

To the East the site faces the rear gardens of a two storey development, while to the West the site faces a row of two storey terraced houses.

Other local amenities located within a short distance of Manwood Street include Chestnut Nursery School and 'Hanley Arms' a pub, indicative to the area.

The site is approximately 0.116 hectares.



### Key

 Site Boundary

 Roads

 Pedestrian path

 Railway

 Bus stops

 Main road

 DLR