

EAST HAM COMMUNITY ASSEMBLY



WE ARE COMMUNITY ASSEMBLIES.

WE ARE NEWHAM.



Your neighbours are delivering great projects in your area.
Come and meet them and celebrate positive change in your neighbourhood!

WE ARE NEWHAM.



WELCOME



Welcome to East Ham Community Assembly 4: Project showcase

Wednesday 8th March 2023

WE ARE NEWHAM.



WELCOME



Zakir Adam

Community Neighbourhood Manager
East Ham and Manor Park

WE ARE NEWHAM.



SCHEDULE

Time	Item
6:00	Welcome & housekeeping
6:05	East Ham Councillors
6:10	Presentations from your local project leads
7:10	Activity – Celebrating positive change
7:35	You said, we will: how your feedback has shaped the next cycle
7:45	Join your local Working Group in the next cycle
7:55	Closing Remarks from Cllr Charlene McLean Reflections wall

HOUSEKEEPING AND GUIDELINES



- Listen to each other
- Be respectful
- You don't have to agree
- Share what comes to mind
- This meeting will be recorded and photographed. Please let us know if you do not wish photos of you to be taken
- Enjoy being part of shaping your Community Neighbourhood

WE ARE NEWHAM.



WHAT TO EXPECT FROM TODAY



This is our last Community Assembly for this cycle!

Today you will:

- Hear from the projects you voted for
- Celebrate the changes made to your neighbourhood since 2021
- Share how the projects have impacted you
- Find out how to get involved in the next cycle
- Leave your thoughts and comments before you go

WE ARE NEWHAM.



EAST HAM NEIGHBOURHOOD COUNCILLORS



EAST HAM



Councillor
Femi Falola



Councillor
Shantu Ferdous



Councillor
Imam Haque

EAST HAM SOUTH



Councillor
Lakmini Shah



Councillor
Musawwar Alam



Councillor
Susan Masters

WALL END



Councillor
Lester Hudson



Councillor
Jemima McAlmont

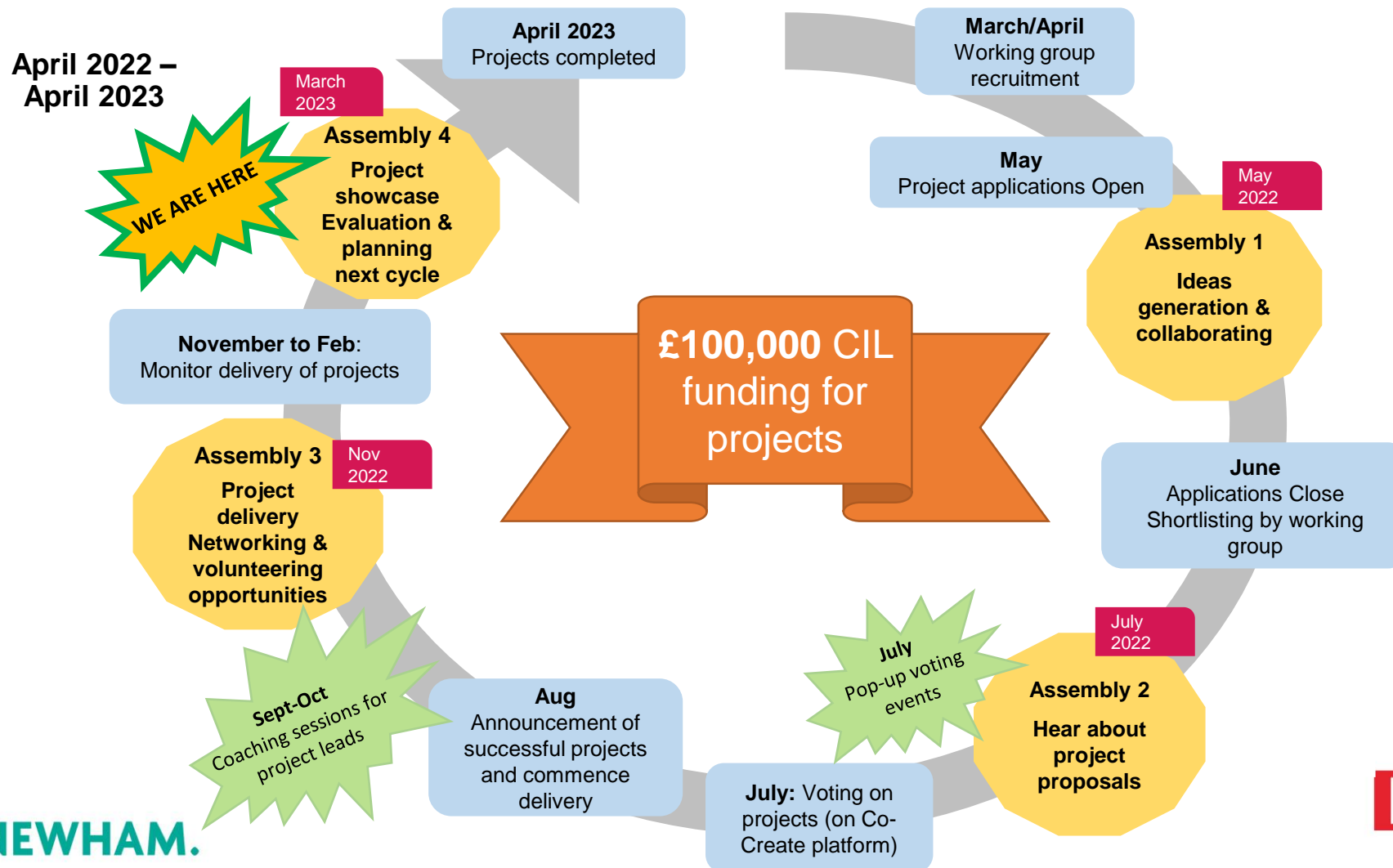


Councillor
Luke Charters

WE ARE NEWHAM.



COMMUNITY ASSEMBLY: OUR STORY SO FAR



WE ARE NEWHAM.

COMMUNITY ASSEMBLY: OUR STORY SO FAR



- You chose your local priorities in 2021
- Great projects were delivered in 2021-2022
- New ideas were put forward in May 2022
- £100,000 was available in each Neighbourhood area
- Your working group assessed each application and put forward those who met the criteria
- You voted for your favourite projects in July 2022 on Newham Co-create
- Successful voted projects were announced in Sep 2022
- Projects started in October 2022

WE ARE NEWHAM.



OUR LOCAL PRIORITIES



In June 2021, you voted for the top three priorities for East Ham :

- 1. A safer, cleaner and more accessible neighbourhood**
- 2. Environment**
- 3. Parks and Open Spaces**

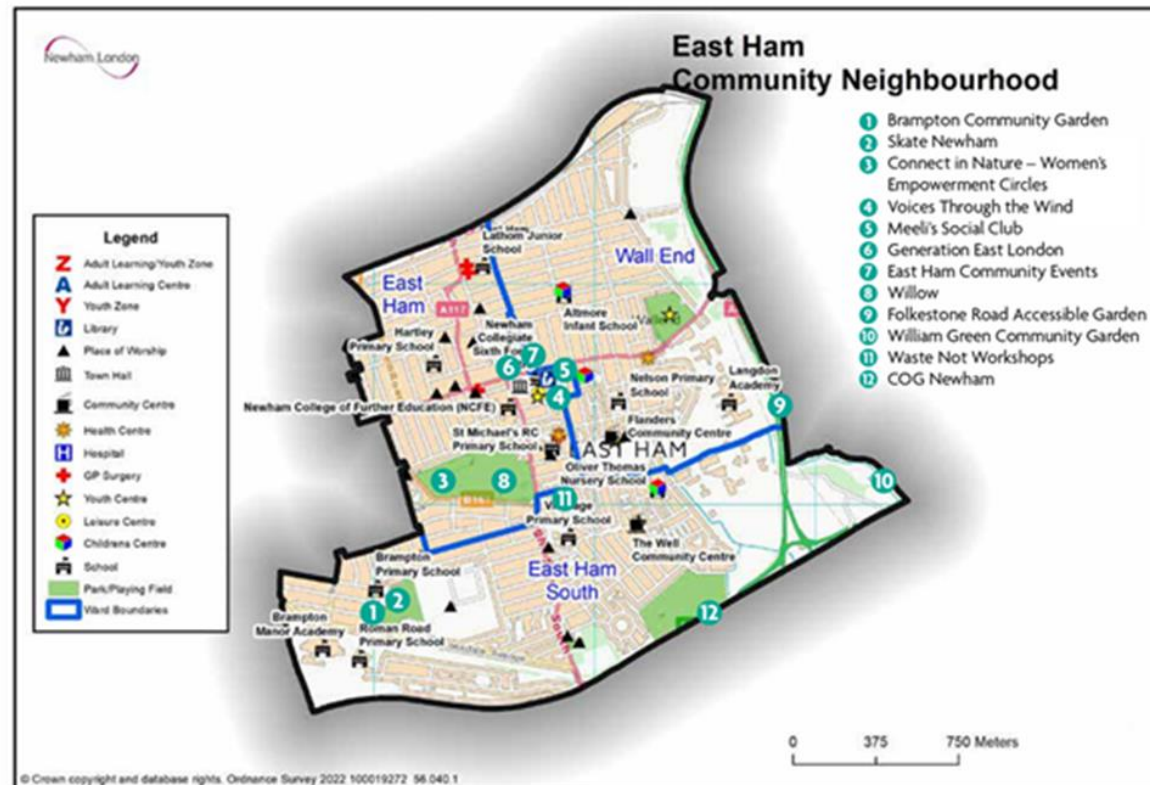
WE ARE NEWHAM.



UPDATES FROM YOUR LOCAL PROJECTS

MAP OF COMMUNITY ASSEMBLY PROJECTS

1. BRAMPTON COMMUNITY GARDEN
2. SKATE NEWHAM
3. CONNECT IN NATURE- WOMEN'S EMPOWERMENT CIRCLE
4. VOICES THROUGH THE WIND
5. MEELI'S SOCIAL CLUB
6. GENERATION EAST LONDON



7. EAST HAM COMMUNITY EVENTS AND INFORMATION
8. WILLOW
9. FOLKESTONE ROAD ACCESSIBLE GARDEN
10. WILLIAM GREEN COMMUNITY GARDEN
11. WASTE NOT WORKSHOPS
12. COG NEWHAM

WE ARE NEWHAM.

VOICES THROUGH THE WIND

£2,000

Marianna Zappi and Jamal Jones Thomas
Resident

VOICES THROUGH THE WIND

A PROJECT BY
RZN RECORDS



PROJECT DESCRIPTION



A 5 weeks creative writing course aimed to enable young children between the age of 8 -13 years old to express their voices through the use of creative writing. The course will be oriented and focused on confidence building exercises, public speaking, storytelling, and will enable the young attendees to feel empowered and able to let their voices be heard, whilst being able to address what a safer neighbourhood would look like to them.

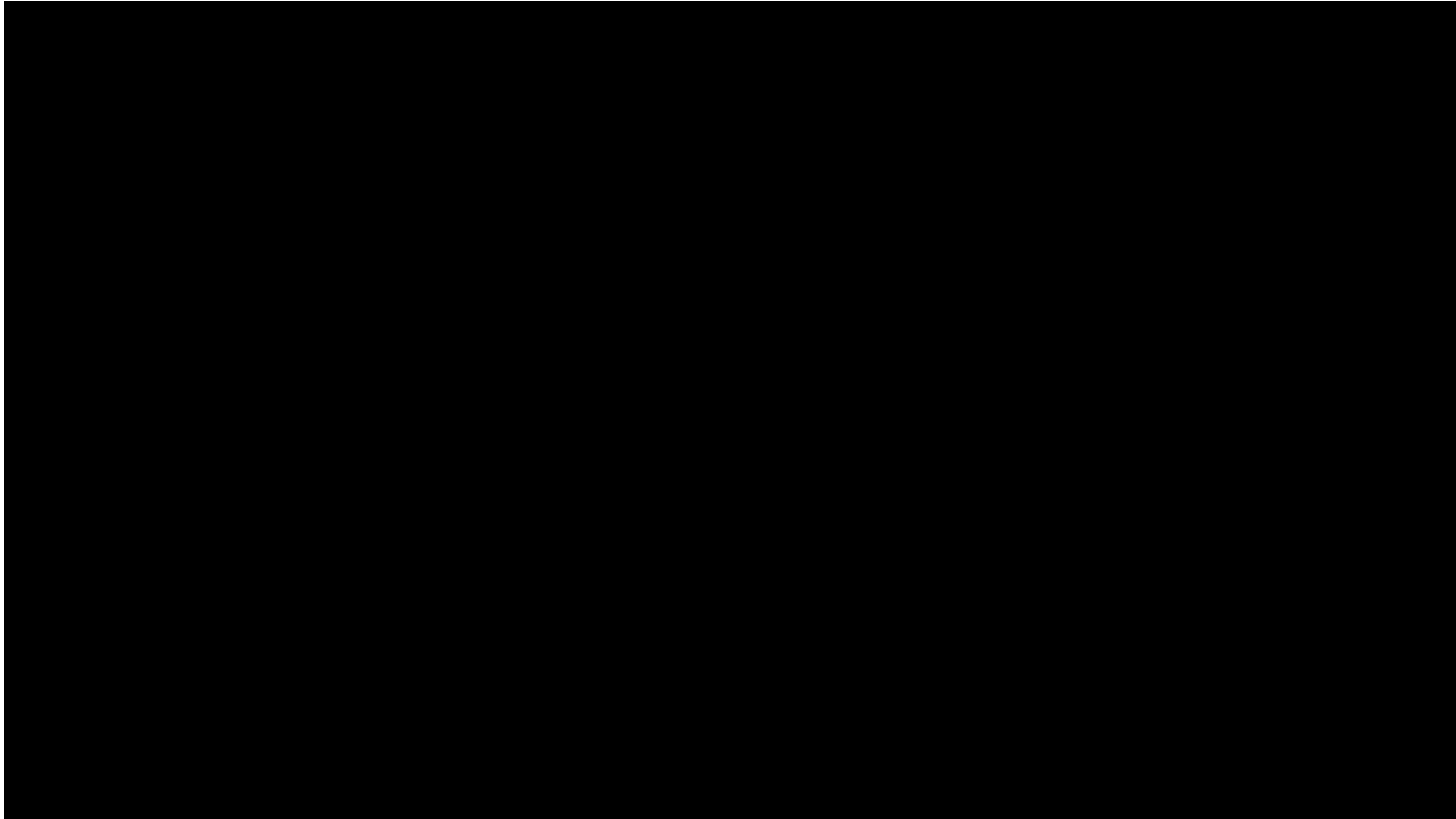
A SAFER, CLEANER AND MORE ACCESSIBLE NEIGHBOURHOOD



In these difficult times we are leaving in, feeling safe in our neighbourhoods has become even more important. We want young people to explore their feelings and turn them in to creative writing pieces of social relevance.

Only by acknowledging the need for change , change can be attained.

Our young people made a short film out of their story



COSTS BREAKDOWN

Facilitation	Facilitators fees and travel expenses - (fees per facilitator £750 – therefore 2x£750)	£1,500
Program advertising digital advertising and print)	We utilised our presence online and offline to promote and advertise the program widely across our channels.	£300
Miscellaneous	Stationary, refreshments, materials	£200
	Total amount requested from the Community Assemblies	£2,000



VOICES THROUGH THE WIND

A FREE CREATIVE WRITING SHORT PROGRAM
FOR 8 TO 13 YEARS OLD

Review

100% OF THE PARTICIPANTS
WOULD ATTEND AGAIN



VOICES THROUGH THE WIND

A FREE CREATIVE WRITING SHORT PROGRAM
FOR 8 TO 13 YEARS OLD

Review

100% OF THE PARTICIPANTS WOULD
RECOMMEND THE PROGRAM TO
FRIENDS & FAMILY



VOICES THROUGH THE WIND

A FREE CREATIVE WRITING SHORT PROGRAM
FOR 8 TO 13 YEARS OLD

Review

100% OF THE PARTICIPANTS ENQUIRED ABOUT
OPPORTUNITIES FOR THEIR CHILDREN TO
ATTEND CLASSES FACILITATED BY
RZNRECORDS



VOICES THROUGH THE WIND

A FREE CREATIVE WRITING SHORT PROGRAM
FOR 8 TO 13 YEARS OLD

Review

100% OF THE CHILDREN WERE INSPIRED TO BE
CREATIVE AT HOME AFTER ATTENDING THE
PROGRAM



RAGGO ZULU NATION LTD

Raggo Zulu Nation LTD is a London based, independent record label.

It comes from a vision that has at the heart of it, the necessity for a fairer and more inclusive community amongst artists who deserve a chance to exercise their freedom of expression through music, poetry, art and fashion.

It is an independent, self sufficient running business.

Email: info@raggozulunation.com



Marianna
Zappi



Jamal Jones Thomas

UPDATES FROM YOUR LOCAL PROJECTS



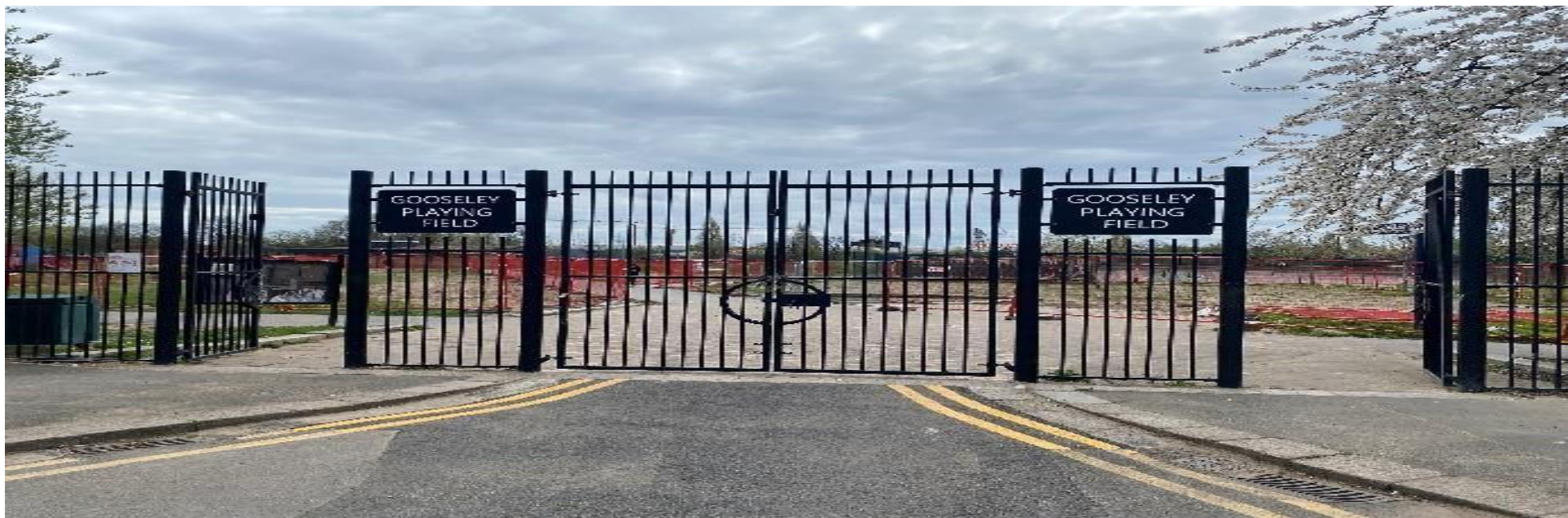
COG NEWHAM
£19,600

David Sparks
VCFS

WE ARE NEWHAM.



COG Newham



History

- Gooseley BMX track was originally built as part of the 2012 Olympic legacy, there has been a few clubs running at the track but unfortunately due to the track falling into disrepair the clubs closed.





Priorities for the Community Assembly are:

- 1. A Safer, Cleaner and More Accessible Neighbourhood*
- 2. Environment*
- 3. Parks and Open Spaces*

Our project will help address some of the priorities by;

- improving local community facilities within a public space.*
- creating accessible pro-social opportunities for young people in the area to engage with.*
- encouraging young people to spend more time outdoors in their local park and environment.*
- encouraging young people to exercise and reap the rewards of the physical and social health benefits that it entails.*
- through some of our more bespoke targeted sessions with local schools and services for young people identified as 'at-risk' and 'vulnerable', we aim to engage with young people who are engaged with and/or on the periphery of ASB.*

The project costs have been broken down as follows

New Bikes/Helmets and equipment = £5000

Coaching costs for weekly sessions for a period of 12 months = £9600

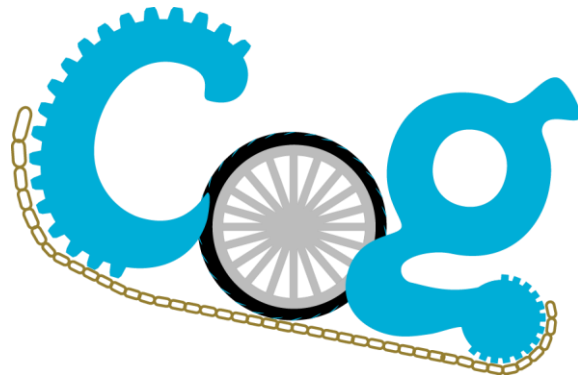
Tools for Cycle mechanic workshop = £1500

Costs for media/advertising/printing = £500

Costs for targeted Cycle mechanic/School sessions = £3000



Thank you



UPDATES FROM YOUR LOCAL PROJECTS



FOLKESTONE ROAD ALLOTMENTS ACCESSIBLE COMMUNITY GARDEN £20,000

**Folkestone Road Allotments
VCFS**

WE ARE NEWHAM.







Project Summary

To transform a currently unused allotment plot into an inclusive communal garden with 11 raised planting beds with communal greenhouse, compost, and storage area, water tank and drinking water point.

There will also be a covered pergola with picnic benches to encourage all the raised bed holders to sit, converse, share ideas and produce.

This place will also provide opportunities for bed holders to engage with others, supporting wellbeing and helping to encourage better mental health.





Addressing Local Priorities



A safer, Cleaner, and more Accessible Neighbourhood

The community garden will bring into use a neglected piece of land, to create a space that will provide a fully accessible, safe and welcoming space allowing diverse residents to work together growing affordable food and bringing them to together in a positive neighbourhood setting

Parks and Open Spaces

The area is currently unused and unproductive, the creation of this new community garden will make a positive contribution to improving an open space in the neighbourhood.

Environment


The garden will also improve the environment and by using organic methods and considered planting will encourage better biodiversity; it will enhance the space for both people and wildlife, biodiversity in the area, attracting bees, birds and Insects.

Connecting community

We aim for people to connect with their community. Some people talk of never seeing their neighbours, not feeling part of the community, having no say in what happens in their community – being involved in the community garden will enable people to connect with their community in a meaningful way – one that respects difference and promotes diversity.

Many friendships are formed at the allotment and there are many examples of care and attention which those involved show to one another.

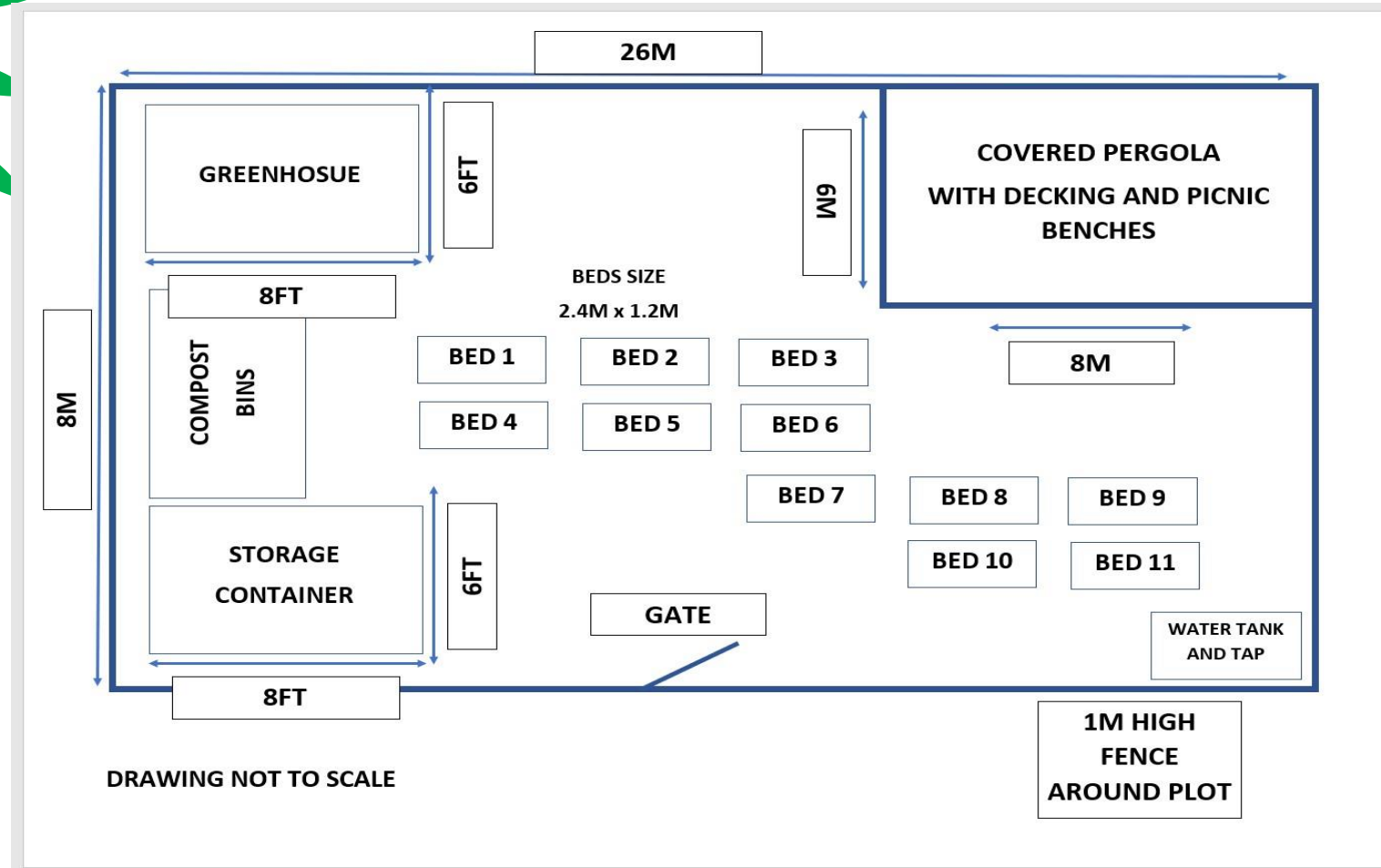
Children involved with the project will be able to identify and eat vegetables they would have never considered before.



Photos



Design





Delivery

Project Milestones:

Week1: Clear Site level ground

Week 2: Create base for shed, pergola and green house and install fencing/gate

Week 3: Build pergola

Week 4: Build raise planters and compost bin

Week 5: Install/lay crushed concrete pavs and fill beds with compost



UPDATES FROM YOUR LOCAL PROJECTS



EAST HAM COMMUNITY EVENTS WITH THE RENEWAL PROGRAMME £9,431.40

Joseph Richards
VCFS

WE ARE NEWHAM.





East Ham Community Events with the Renewal Programme



Agenda and vision

- Create a shared vision for East Ham and its diverse community.
- Tackle local priorities and make East Ham a better place to live.
- A safer, cleaner and more accessible neighbourhood
- Environment
- Building Healthy Communities
- Parks and Open spaces



What we want

WHAT WILL WE DO?


- We will host 3 events in total, at East Ham library
- We will include stalls with representatives from: local adult education centres and community centres offering activity enrolment, social prescribers offering health advice, the police, LGBT support groups, foodbanks, immigration advice giving organisations and other voluntary organisations.
- Each event will offer team building, sports and creative activities for children. Each event will offer a range of free healthy and inclusive food options with catering provided from local East Ham businesses.
- We will include speakers from the community, including seminars from local business-people, the police and other community leaders. We will also host talks on recycling and preserving East Ham's natural environment..

We will include stalls with representatives from:

- GSCE tuition
- Youth activities: arts & crafts, smoothie making, non-contact boxing, table tennis, archery
- Foodbank
- Immigration advice,
- Newham public health
- Training and education
- Intergenerational Programme
- Climate change
- Fuel poverty advice + Warm Haven
- Local Councillors
- Police



WHAT WILL BE INCLUDED?



How will we address local priorities?

Antisocial Behaviour & Enforcement

- **By bringing the community together in a collaborative setting we will create greater cohesion.**
- **By providing engaging activities for young people and vulnerable individuals who may otherwise be at risk of anti social behaviour.**
- **By exposing young people to be creative, sport activities and positive role models, we hope to inspire a new generation of East Ham residents.**
- **By providing advice and support to meet material needs (immigration advice, foodbank, LGBT support, voluntary organisation information), we will prevent vulnerable people from being forced to commit petty-crime to survive.**
- **By providing a talk from the Met Police, we bridge gaps between police enforcement and the community, helping to develop trust and understanding.**

Environment

Workshops with local group climate you change to support local people and young people in understanding the positive practical and affordable contributions that their families can make to tackle climate change .

www.climateyouchange.org

By offering talks on recycling East Ham residents will be encouraged to think about their own impact on the environment .





Health & Wellbeing

The project will provide people with tools to access food banks to improve access to nutrition and healthy regular meals. Also provide those experiencing food poverty with the opportunity to access healthy nutritious and free meals at all community events .

These events will provide young people with the chance to engage in physical activities as well as encouraging exercise on the days of events .

By providing tools to improve material life circumstances for example immigration advice and support.

By providing space for interaction and the development of friendships we will be supporting residents to improve their mental wellbeing through informal peer support networks.

Working with The Together Project, a national charity working to reduce loneliness and increase wellbeing by promoting intergenerational relationships.

Timeline

Community Event

**East Ham library Saturday
1st April 2023 12PM to 4PM**

Community Event

**East Ham library Saturday
3rd June 2023 12PM to 4PM**

Community Event

**East Ham library Saturday
29th of July 2023 12PM to
4PM**

Cost and Budget: £9,431.40 total

£873.20 for coordinator salary. £21.83 p/hr (including oncosts), 10hrs per event (including 1hr set up time and 1hr clean up) - 9am – 7pm = £218.30 per event.

£1260.80 for event staff. x2 staff per event, £15.76 p/hr x10 hrs = £157.60 x2 people = £315.20 x4 events.

£2000 catering. £500 per day from local businesses.

£240 marquees for outdoor events. £30 per marquee to be reused for both outdoor events x8.

£800 van hire to move equipment. £100 each way per day.

£400 Volunteer expenses (transport). £100 per day.

£400 for community organisations (£100 per day to cover transport and other expenses).

£400 public speaker costs. £100 per event.

£500 sports equipment. Equipment for sporting activities (for x2 outdoor events balls, cricket set, hoola hoops, short tennis, other equipment).

£500 for sport coaches. £25 p/hr, x2 coaches per day, 5hrs per coach x2 days.

£500 equipment for art activities.

£400 creative activity teachers for library event creative activities. x2 teachers per day, £100 fee per teacher.

£300 for advertising: in print materials, online ads and social media posts.

£857.40 Overhead management costs for our existing staff to help oversee this project. 10% of £8,574 subtotal



Thank You

Joseph Richards



joseph.richards@renewalprogramme.org.uk



[Renewalprogramme.org.uk](https://renewalprogramme.org.uk)



UPDATES FROM YOUR LOCAL PROJECTS



WASTE NOT WORKSHOPS
£10,800.97

Freya Harwood Bond
VCFS

WE ARE NEWHAM.





Where are we in the project?

We have now conducted 13 of our 18 scheduled 'Waste Not Workshops'.

We have been receiving donations from residents who are dropping off clean waste materials to Red Door Studios before each workshop.

Participants are then repurposing our community's waste and creating inspiring artwork and practical items.

These workshops have been incredibly rewarding so far and people of all ages have been coming in to learn something new and to socialise in a free and creative environment.

Artist and process experimentalist Leanta Coraleen has been leading the 'Paper + Product Making' workshops. These have given participants an opportunity to learn important practical skills using waste paper. Not only have participants made their own paper but they have also learnt how to apply pattern to the hand-made paper, converting this into sketchbooks and beads inspired by ethnic diasporas. The possibilities in this medium are endless and particularly important as paper and card make up the biggest percentage of wasted materials.





Photographs from a paper-making workshop







Here are some examples of handmade paper, printed and patterned paper and sketchbooks made by our workshop facilitator Leanta.





Freya Harwood Bond has been leading the 'Collage + Assemblage' workshop. So far we have explored paper, card, wood, plastic and, in our most recent session, fabric. The participants have been responding very intuitively and getting stuck in immediately. They have been creating artwork by practising simple skills using affordable equipment which they can explore further at home. Residents attending have also been learning how to use tools like power drills, sewing machines and soldering irons which are skills that can be utilised elsewhere.

Photographs from our plastic workshop





Photographs
from a paper
and card
session



Here are some examples of the artwork we have been informed by during the workshops. Below is a piece made completely of plastic made by Aurora Robson. Opposite is a piece made of scrap fabric by Cas Holmes.



The pieces on the left and in the middle here are made from scrap metal by Scottish artist Andy Macintosh. He welds the pieces of scrap metal together, using them as though they are collaged pieces of paper. We will be using soldering irons in the next session in order to give participants an opportunity to work in a similar way with scrap metal. The piece on the right is made from wood collected from the beach by artist Paul Clowney.



What's next?

Following our last workshop in April, artists Freya Harwood Bond and Elizabeth Clough will be curating an exhibition which will include artwork and practical items made by residents during the project.

Participants have been excited by the idea of their artwork being exhibited and we hope it will inspire other residents that weren't part of the project to explore some of the techniques we've been using.

Alongside this we will be making a responsive piece of artwork made from litter from our parks and open spaces. We hope this will highlight the scale of the littering problem in East Ham while simultaneously providing more proof that there are creative ways to re-use the litter. The exhibition will be held in May.

The remaining dates and information regarding our last 5 sessions of the project are displayed on the right.

If you'd like to keep up to date on our project, any upcoming workshops and the opening times for our exhibition in May. Here are some ways you can do so:

Instagram: @reddoorstudiose6
Facebook: Red Door Studios E6
Email:
freya@throughthereddoor.org

WHEN?

PAPER + PRODUCT MAKING 4-6pm
SUN 26th MAR
SAT 15th APR SAT 22nd APR

COLLAGE + ASSEMBLAGE 3-5.30pm
SUN 19th MAR SUN 2nd APR

REAR OF,
120 HIGH ST. SOUTH
EAST HAM, E6 3RW

WHERE?

We'd like to thank Newham Council and everyone else who has been involved in the Community Assembly process.

We are incredibly grateful to have been given this opportunity to realise our ideas and give Newham residents a chance to experiment and create!

#PeoplePowerProjects

UPDATES FROM YOUR LOCAL PROJECTS



MEELI'S SOCIAL CLUB £5,000

Prabhudas Tanna
Resident

WE ARE NEWHAM.





MEELI'S SOCIAL CLUB



Project will give young adults over 18 with learning disability and mental health to meet on Saturdays.

They will be provided with different activities at the club from games to exercises and day trips.

This can develop their skills and how to socialise with others.
Encourage them to mix other groups members.





MEELI'S SOCIAL CLUB



This club will improve Newham current provision for post 18 and giving families safe and regular place to meet. This club aims to improve mental health of parents by providing them time off and improve their well being and mental health. This club will give young people different activities to young people and meet their needs.





MEELI'S SOCIAL CLUB



Project will run for 15 weeks

Hall Hire

Liability insurance

Staff Cost

Resources

We will be working with volunteers to support delivery of this programme.



Meeli's Social Club will start on **Saturday 11th March 2023**
at East Ham Library at 1pm



UPDATES FROM YOUR LOCAL PROJECTS



GENERATION EAST LONDON
£13,070

Sign For All Community
VCFS

WE ARE NEWHAM.





Generation East London

SIGN FOR ALL COMMUNITY LTD

Projects under Generation East London



- Deaf Awareness Training
- Self-Defence Class for Deaf & Hearing Women
- BSL Storytelling with Trovers Orr

Deaf Awareness Training



- We delivered 6 sessions of Deaf Awareness Training at East Ham Library.
- Around 6-10 people attended per session including Newham Volunteers, East Ham Residents, Met Police and Councilors from Manor Park.
- We have raised awareness within the hearing community on how to communicate with deaf people, and understand deaf culture, and barriers. Alongside, teaching British Sign Language (A-Z, Greetings and Numbers).

Self-Defence Classes for Deaf & Hearing Women



- We have partnered with MMARAP, who have led 6 classes.
- Around 4-6, deaf women have joined monthly, 2 of which are East Ham residents.
- The classes include different techniques and provide deaf and hearing women with a safe space and an accessible class.

BSL Storytelling with Trovers Orr



- We have partnered with Trovers Orr, author of 'Daniel & the Rubbish Monster'
- 6 sessions have been delivered at East Ham Library
- We have managed to engage with deaf and hearing families in East Ham.
- The stories are translated into British Sign Language and followed by a range of activities teaching children about the importance of keeping the environment clean and recycling.

Highlighted Video

- <https://youtu.be/ljM4mXCZOC4>



Remaining Workshops at East Ham Library



- Wednesday 15th March: Self-Defence Class from 6.30 pm-7.30 pm
- Saturday 18th March: BSL Storytelling with Trovers Orr from 11 am-12.30 pm

SIGN FOR ALL COMMUNITY PRESENTS

SELF DEFENCE CLASSES

FOR WOMEN

WEDNESDAY 15TH MARCH 2023
6.30PM-7.30PM

WWW.MMARAP.CO.UK

For Deaf & Hearing Women in East Ham.
BSL Interpreter will be provided

East Ham Library, E6 2RT

To book email
booking@signforallcommunity.co.uk

FREE EVENT

A woman with dark hair tied back, wearing a black and white striped shirt, is shown in a dynamic self-defence pose, with one arm extended forward and the other bent. The background is a dark blue and black gradient with white and yellow text.

BSL STORYTELLING

Children's area

FREE EVENT

We will teach children sign language and do more activities

Saturday 18th March 2022
11am-12.30pm
@East Ham Library, E6 2RT

DANIEL & THE RUBBISH MONSTER
Murray the Librarian & Friends presents
Written by Gretzel Orr
Illustrated by R. Moante

Interactive & Engaging Activities

- ✓ Open to Deaf & Hearing Families
- ✓ A signed story of Daniel & The Rubbish Monster
- ✓ Activities
- ✓ A BSL Interpreter is provided.
- ✓ Teach children sign language

To book email
booking@signforallcommunity.co.uk

The book cover for "Daniel & The Rubbish Monster" features a cartoon illustration of a young boy named Daniel with dark skin and curly hair, wearing a green t-shirt and blue pants. He is standing next to a green trash bin. The background is a mix of green and yellow with some purple splatters. The title "DANIEL & THE RUBBISH MONSTER" is written in a playful, bold font.

Thank you for your votes and support!



@sign_for_all



www.signforallcommunity.co.uk



info@signforallcommunity.co.uk

UPDATES FROM YOUR LOCAL PROJECTS



WILLOW
£5,000

Lucy Wray and Leanta Lawrence
Resident

WE ARE NEWHAM.



WILLOW

A collaborative theatre project in Central Park

Public workshops with Newham-based artists:

- Handcrafting techniques
- Performance skills



Public performance in the park:

- Sharing material from workshops for friends, family, and all park users.
- Professional actors & installation artist
- Food shared as part of the event
- Free of charge



How WILLOW engages with local priorities

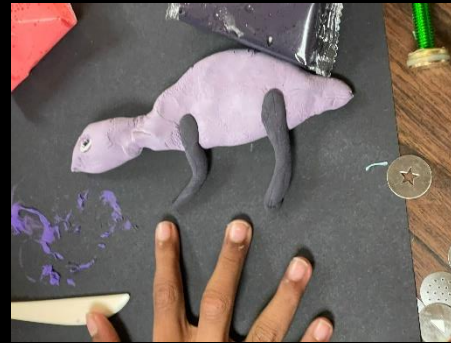
- **A safer, cleaner and more accessible neighbourhood**
 - Inclusive event, accessible to all, that brings people together & builds relationships
- **Environment**
 - Low-impact pop-up event, self-sufficient & sustainable
- **Parks and Open Spaces**
 - Celebrating our beautiful natural stage – Central Park!



Project Costs

With **£5000** from Community Assemblies we can pay for:

- 5 lead creatives (inc. Director, Producer, Lead Artist)
- 4 artists (delivering workshops & installation)
- 3 performers (professional actors/musicians)
- costs for catering, marketing, materials and contingency.



SPRING 2023
WILLOW THEATRE WORKSHOPS

“Take the
adventure, heed
the call.....out
of the old life
and into the
new!”


KENNETH GRAHAM
Wind in the Willows

Guided workshops with professional artists and theatre makers, exploring adventures on the themes of nature, friendship and unity.
Practise a craft you already love, or try something new.
For All Ages



Contact Details

Community Arts Newham are supporting the running of WILLOW. Please ask us anything!

 @communityartsnewham

Community Arts Newham

Email: communityartsnewham@gmail.com



A community neighbourhoods co-create project

Willow
drama, music, arts & crafts
workshops

WORKSHOP 1
Saturday 18th Feb 2023
@St Barts Church Centre E6
2.30-4.30pm

WORKSHOP 2
Saturday 25th Feb 2023
@St Barts Church Centre E6
2.30-4.30pm

WORKSHOP 3: PARK SHOWCASE
April 2023
@TO BE CONFIRMED 11:00-1:00pm

- Guided workshops with professional artists and theatre makers
- All 3 workshops will be followed by a sharing of ideas and food
- Explore themes of nature, friendship and unity
- Practise a craft you already love or try something new
- For All Ages

Logos at the bottom: R NYX EAST GALLERIA, Newham Community, Newham London, and a 'MADE IN NEWHAM' logo.

CONNECT IN NATURE: WOMEN'S EMPOWERMENT CIRCLE £3,040

**Uzmaa Butt
Resident**

WE ARE NEWHAM.



COMMUNITY ASSEMBLY WOMEN'S EMPOWERMENT CIRCLES PROJECT

UZMAA BUTT



Bringing women together to talk, share, exercise
and feel safe in our parks

£3,040 – delivery, equipment and resources,
healthy refreshments in local parks and cafes

Talks on menopause, healthy eating and mental
health



COMMUNITY ASSEMBLY WOMEN'S EMPOWERMENT CIRCLES PROJECT

UZMAA BUTT



Connect in Nature launched on Saturday 4th March 2023.

We will be holding a special discussion on menopause on Saturday 11th March 2023 at 10am-12pm in celebration of International Women's Day



COMMUNITY ASSEMBLY WOMEN'S EMPOWERMENT CIRCLES PROJECT

UZMAA BUTT



UPDATES FROM YOUR LOCAL PROJECTS



RAINBOW GARDEN E6 **£10,000**

Hannah Duthie and Natasha Zielazinski
Resident

WE ARE NEWHAM.





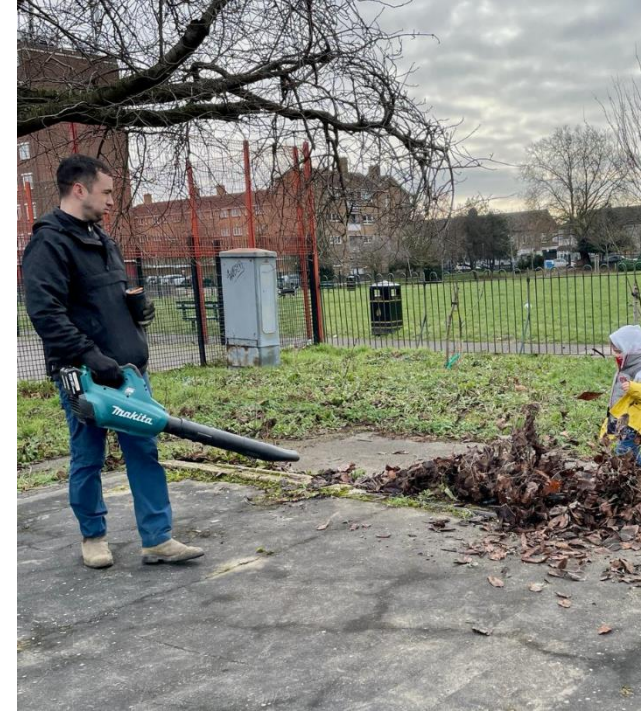
Rainbow Community Garden, including Skate Newham Project

Update for Community Assembly March 2023



Rainbow Garden and Skate Newham projects have merged to become one group responsible for the site of the garden and the developing multi- use skateable area.

We have formed a committee, have written a constitution and meet regularly with Parks & CA.



Skate Progress.....

- ✓ Site made safe –risk assessment and insurance now in place
- ✓ Harris fenced off work area set up
- ✓ Site cleared
- ✓ Ground levelled and trip hazards filled in
- ✓ Old exposed piping boxed off



Next Steps for Skate Newham.....

We have been mapping out the stages of the skate build in this road map (below) and have also sent our designs to a skateboard park designer to draw them professionally and help us get to the next stage which is to get the plans approved by ROSPA & Newham council's Parks department



MINI RAMP AND SKATE SURFACE ROADMAP

MAKE THE SITE SAFE

- Materials & rubble secured behind fence
- Water pipe boxed safely
- Tree removed

PLAN REVIEW & INSURANCE

- Requires funds from Compost
- Plan review £300
- Post install inspection £400
- Annual inspection £100
- Skateboard GB insurance £100

FUTURE MILESTONES

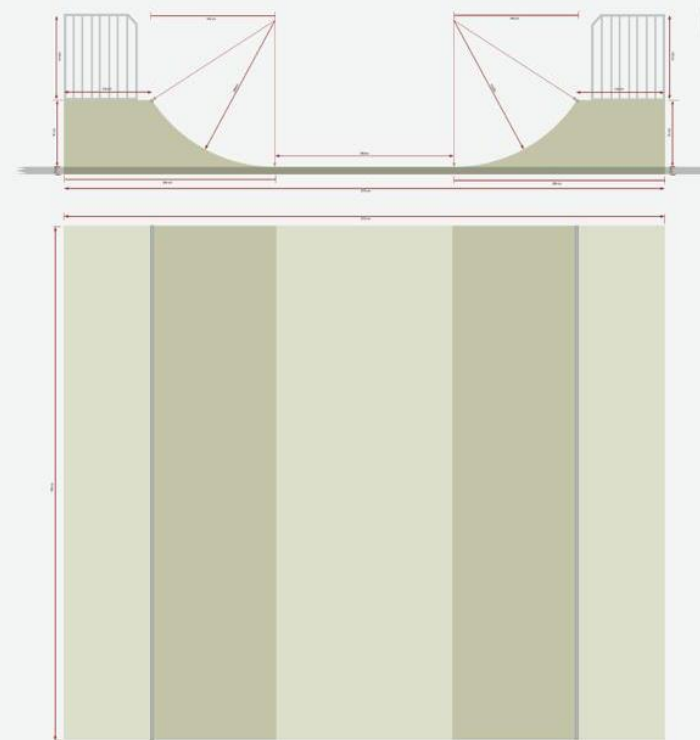
- Delivery logistics
- Construction
- Facility inspection by RoSPA and Parks department
- Launch event

CREATE PLAN

- Guidance from UK skatepark contractors
- Professional CAD design from Sphaecon
- Acquire RoSPA guidelines BS EN

CONSTRUCTION PLAN

- Budget materials
- Seek agreement from Parks department for methods & contractors
- Seek support by sponsors



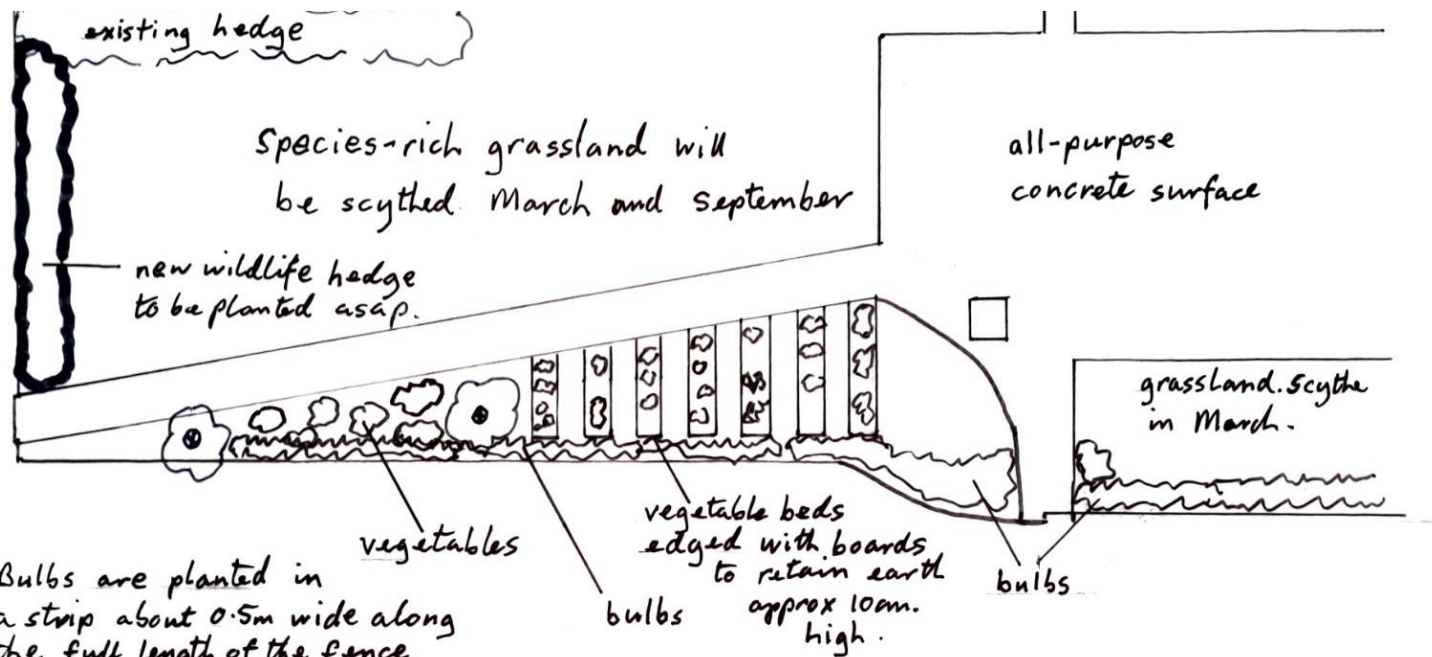
Brampton Low Concrete Mini Ramp (8.19M x 7.0 M x 0.91M)
Built upon New concrete Slab. (43.2 M x 7.31M x 0.10M)





Garden progress....

- ✓ Bulbs and new hedge planted
- ✓ Old hedge trimmed
- ✓ Garden plans updated to include skatable areas
- ✓ First vegetable bed marked out and turned over.
- ✓ We are currently growing in giant builders bags until the ground is ready!!



Bulbs are planted in a strip about 0.5m wide along the full length of the fence.

Planting to start asap. and continue in autumn.

New wildlife hedge at western end to be planted asap.

All grassland to be scythed and raked in March.



Contact us



WILLIAM'S GREEN COMMUNITY GARDEN

£20,000

New Legacy CIG
VCFS

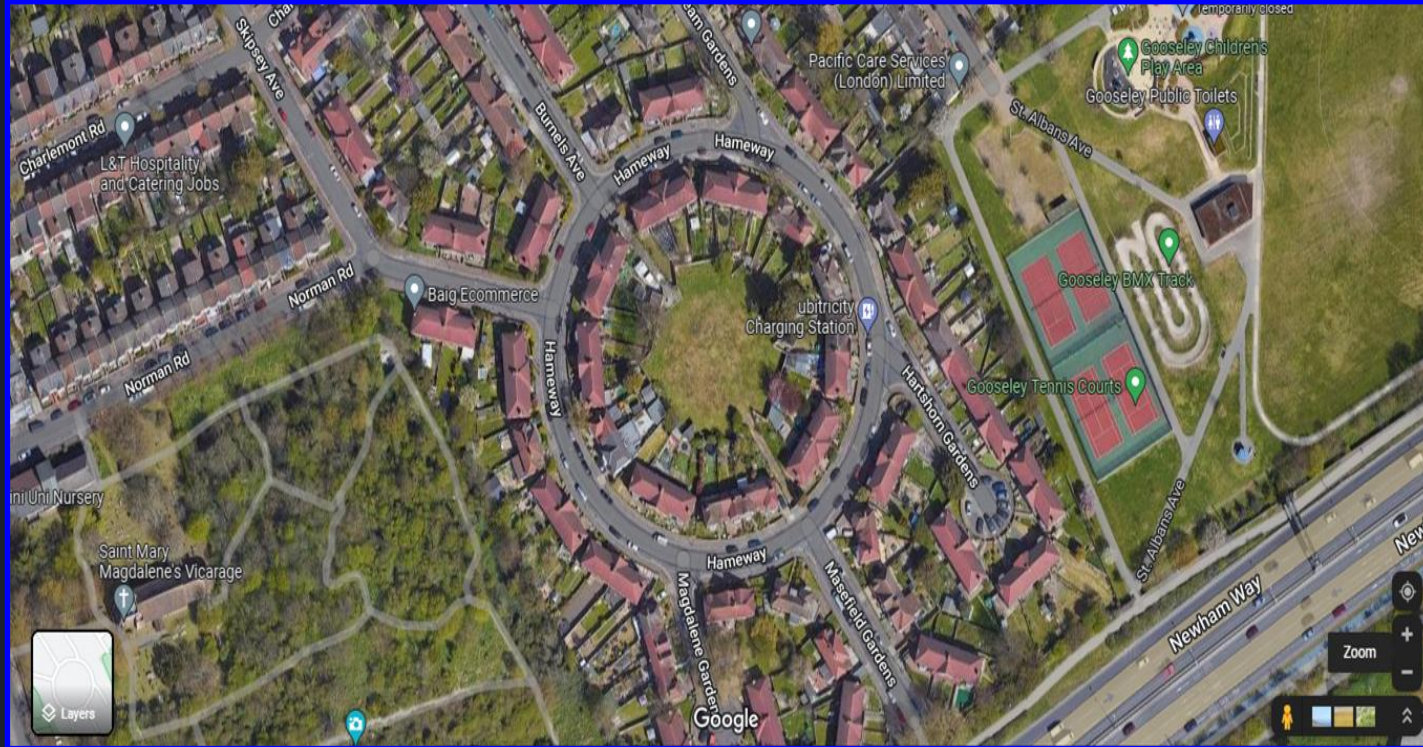
William's Green Community Garden



Presented by :
New Legacy Community Interest Group

Speakers :
Yvonne Johnson & CiCi Chobbah

The Vision



William's Green Currently

Williams Green Community Garden

Community Garden

A public space where locals can connect and learn new skills with the following structure:

- ❖ A small secure house to store equipment
- ❖ A pond to attract wildlife
- ❖ A seating area for rest and relaxation
- ❖ Paths and benches
- ❖ Garden planters, pots, containers, raised beds
- ❖ A gazebo
- ❖ Community Membership System

Project Summary

Objectives

1. Engender Community Cohesion
2. Empower, Encourage and Uplift every age group
3. Educate people on healthy eating and lifestyles
4. Engage the youth by transferring skills from constructing and maintaining the community garden: Landscaping, Construction, Gardening, Agriculture, Community group management, Volunteering, Carpentry



Alignment with Local Priorities

- ❖ Parks and Open Spaces
- ❖ Environment
- ❖ Safer, Cleaner, More Accessible Neighbourhood



The logo for Newham London, featuring a stylized red wave or swoosh above the text "Newham London" in a bold, black, sans-serif font.

Alignment with Local Priorities

❖ Parks and Open Spaces

- Grow organic fruits and vegetables
- Use an underutilised public space
- Cater to people with disabilities
- Available for relaxation and therapy
- Coffee mornings
- Meditation and De-stressing



The logo for Newham London, featuring the text "Newham London" in a bold, sans-serif font. A red, stylized wave or swoosh line arches over the text, starting from the left and ending on the right.

Alignment with Local Priorities

❖ Environment

- Outdoor classroom
- Educate on climate change
- Educate on the environment
- Eco-friendly growing
- Coffee mornings
- Meditation and De-stressing



The logo for Newham London, featuring the words "Newham London" in a bold, black, sans-serif font. A thick, red, curved line arches over the text, starting from the left and ending on the right, framing the words.

Alignment with Local Priorities

❖ Safer, Cleaner, Accessible Neighbourhoods

- Beautify the local area
- Safe space accessible by local residents
- 'Best Gardener' sponsored by businesses
- Youth Engagement and Mentoring
- Gardening and Agriculture workshops



The logo for Newham London, featuring a stylized red wave or swoosh above the text "Newham London" in a bold, sans-serif font.

Project Sustainability

Community Membership and Management

- ❖ Membership fees for members
- ❖ Sale of Seeds
- ❖ Gardening and Agriculture workshops
- ❖ Tours and Visitations
- ❖ Sale of percentage of produce



For any further questions contact New Legacy Team on:

newlegacycig@gmail.com

ACTIVITY: CELEBRATING POSITIVE CHANGE *(20 minutes)*



In the room:

1. Go to the map of your neighbourhood and see the projects that have taken place
2. Use the post-it notes to write how the Community Assembly Projects have changed the place you live in along with how they have impacted you personally
3. Place the post-it note alongside a specific project or at the top or bottom if it is a general comment

On Zoom:

1. Look at the map of your neighbourhood on Jamboard and see the projects that have taken place
2. Use the post-it notes to write how the Community Assembly Projects have changed the place you live in along with how they have impacted you personally
3. Place the post-it note alongside a specific project or at the top or bottom if it is a general comment

WE ARE NEWHAM.



ACTIVITY: CELEBRATING POSITIVE CHANGE *(5 minutes)*

In the room:

1. Come back to your table and look at the local priorities sheets
2. Add one thing that improved in your area below each local priority

On Zoom:

1. Look at the local priorities on Jamboard
2. Use the post-it notes to add one thing that has improved in your local area below each priority

COMMUNITY ASSEMBLIES 2023-2025



This autumn, you gave feedback on Community Assemblies by attending focus groups and responding to surveys.

Your feedback has helped shape the next cycle of Community Assemblies for 2023-2025.

WE ARE NEWHAM.

COMMUNITY ASSEMBLIES 2021-2023



“IT ALLOWS YOU TO MAKE A DIFFERENCE IN YOUR NEIGHBOURHOOD.”

WORKING GROUP MEMBER

“NEWHAM HAS CHOSEN TO LISTEN TO RESIDENTS.”

A RESIDENT LEADING A COMMUNITY ASSEMBLY PROJECT IN 2022-2023



£1.6 million allocated to Newham's 8 Community Neighbourhoods



24 local priorities co-produced by residents



157 projects voted for by Newham residents



Over 16,500 resident engagements, including 5,000+ resident engagements created by the Community Assembly projects themselves.

89%

of residents who attended a Community Assembly in the 2022-2023 cycle felt more connected to their local area after attending a Community Assembly

84%

of residents who attended a Community Assembly in the 2022-2023 cycle felt that the Assemblies provide an opportunity for residents to be involved in decision-making

COMMUNITY ASSEMBLIES 2023-2025



- **You said:**

More people from all communities need to hear about Community Assemblies and participate.

- **We will:**

Refresh communications and create more outreach to increase participation and diversity.

WE ARE NEWHAM.



COMMUNITY ASSEMBLIES 2023-2025



- **You said:**

Community Assemblies need to be more accessible for all residents.

- **We will:**

Continue to have hybrid Assemblies.
Improve Newham Co-create's voting system and have in person voting events.

WE ARE NEWHAM.



COMMUNITY ASSEMBLIES 2023-2025



- **You said:**

One year is too short to come up with project ideas, vote and deliver all the projects.

- **We will:**

Extend the Community Assembly cycle to a two-year cycle with one full year focused on project delivery.

WE ARE NEWHAM.



COMMUNITY ASSEMBLIES 2023-2025



- **You said:**

More support is needed for residents and local organisations leading on projects.

- **We will:**

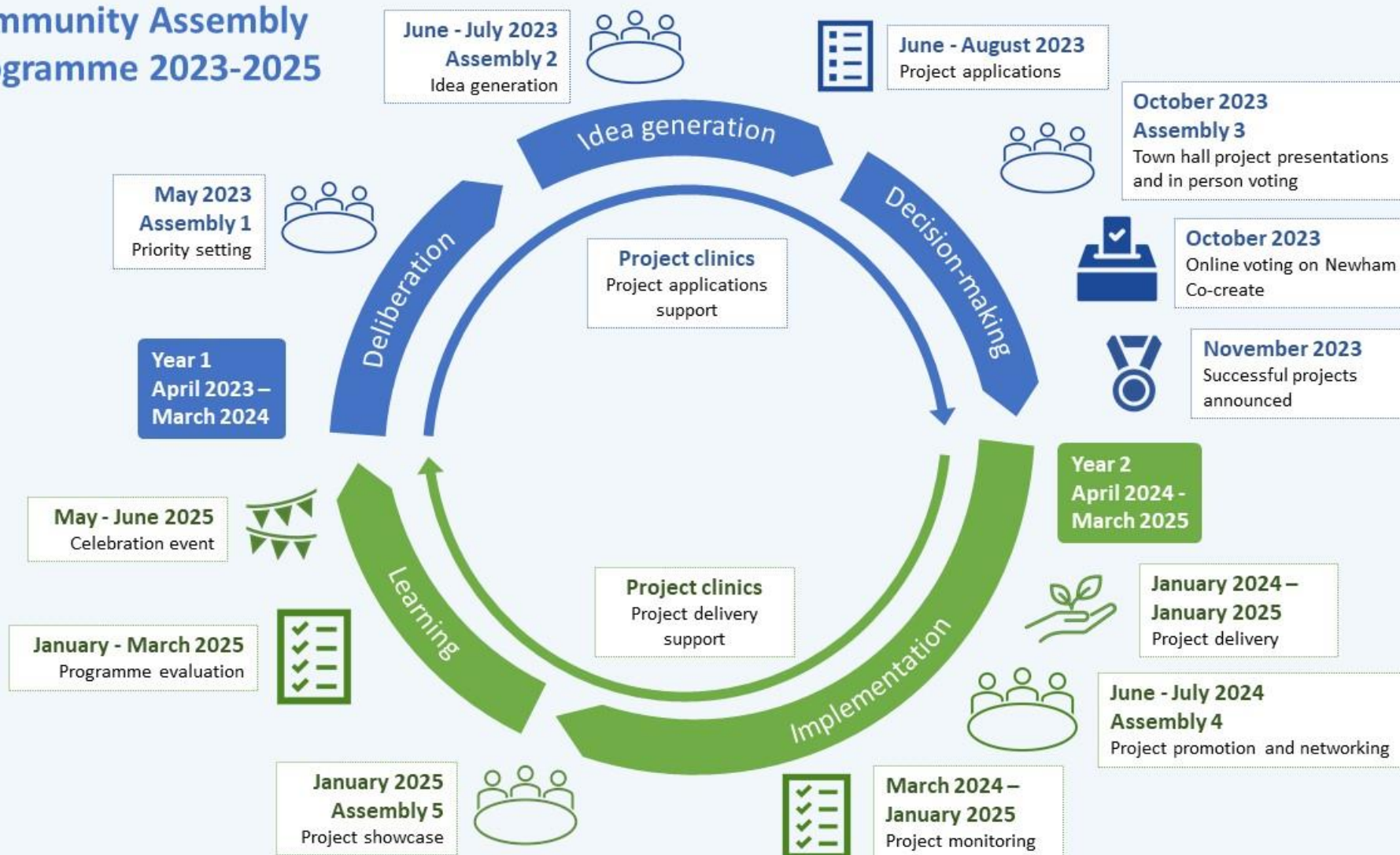
Provide a two-year programme of project clinics at all key stages of the cycle to support you from start to end.

WE ARE NEWHAM.



COMMUNITY ASSEMBLIES 2023-2025

Community Assembly programme 2023-2025



COMMUNITY ASSEMBLIES 2023-2025



Want more detail about how your feedback shaped the next cycle and how the recommendations will be implemented?

Find the evaluation report on

<https://www.newham.gov.uk/council/community-assemblies>

WE ARE NEWHAM.



Join your local Working Group



The East Ham Working Group is made up of residents, council officers and local councillors.

As a Working Group member you will:

- Represent the diverse views of the community
- Use your local knowledge to shortlist projects and make sure they bring positive impact to your neighbourhood
- Oversee projects to ensure they are delivered as promised
- Support local residents and organisations in the delivery of their projects
- Help shape your local area

WE ARE NEWHAM.



Join your local Working Group



EAST HAM WARD

Harshan Kollara
Lois Iyen
Margaret Spence
Yusuf Islam

EAST HAM CENTRAL

Peter Landman
Stewart Smith
Veronica Mgubua

WALL END

Caroline Shaw
Catherine Shaw
Deirdre Kennedy
Hadi Jemaldeen

COUNCILLORS

Councillor Susan Masters
Councillor Jemima McAlmont
Councillor Imam Haque

OFFICERS

Zakir Adam
Samantha Ulysses

WE ARE NEWHAM.



Join your local Working Group



WE ARE EAST HAM COMMUNITY ASSEMBLY WORKING GROUP.

Join your local Community Assembly working group and help shape your neighbourhood!

Community Assemblies give Newham residents the chance to make positive change together in their local area. Join your local working group to support Community Assemblies from start to end.



Scan QR code to apply by 2 April or find out more or join the support clinic on **Wednesday 15 March 2023 6-7.30pm**
www.eventbrite.co.uk/e/559569757207



WE ARE NEWHAM.

WE ARE NEWHAM.



Join your local Working Group



Apply now to become a working group member
Deadline to submit application – Sunday 2 April 2023

Contact your neighbourhood team for further information.

Not sure if this is right for you?

**Join the support clinic on Wednesday 15th March 6-7.30pm
to find out more and get help to apply.**

WE ARE NEWHAM.



COMMUNITY GRANT



KING'S CORONATION COMMUNITY GRANT

Applications open from 16th February 2023 and closes on 17th March 2023 at 5pm

Grants of up to £500 will be available for street parties and local community celebrations

To find out more visit www.newham.gov.uk/coronationgrant

WE ARE NEWHAM.



CLOSING REMARKS

Cllr Charlene McLean Cabinet Member for Resident Engagement & Resident Experience



WE ARE NEWHAM.

THANK YOU!



Thank you for coming to today's Assembly!

Before you go:

- Add your thoughts and comments on the reflections wall
- Fill in a feedback form
- Get help signing up to Newham Co-create to stay in the loop

WE ARE NEWHAM.

